



roberto cavalli
HOME
INTERIORS



ASSAL SOFA	4
KRUGER SOFA	14
ARUBA SECTIONAL SOFA	26
VICTORIA SECTIONAL SOFA	40
CLIFTON SOFA	54
KINGSTON SOFA	60
MANHATTAN SOFA	72
SMOKING.2 SOFA	80
CLIFTON SOFA	88
DARLINGTON.2 SECTIONAL SOFA DARLINGTON SOFA	98
INANDA SOFA	116
MALAWI SOFA	124
BAOBAB DINING TABLE	134
COMORE DINING TABLE	142
ANTIGUA DINING TABLE	152
SIORAF DINING TABLE	160
KIBO DINING TABLE	174
NYOS DINING TABLE	182
KARIBA BAR	188
ELGON BED	194
SMOKING BED	202
NILO BED	210
MALAWI BED	218
MORNE BED	228
NAKURU WALK-IN CLOSET	238
ANTIGUA DESK	246
COMPLEMENTS	254
PRODUCTS INFO	262
JEWEL HANDLES	292

AN IRRESISTIBLE
INVITATION TO RELAX.
ASSAL SOFA SINUOUS
AND SENSUAL LINES
ARE PERFECT TO
SHARE MOMENTS OF
CAREFREENESS AND
REST. ITS CLEAN DESIGN
AND SUBTLE ELEGANCE
ARE ENHANCED BY SOFT
LEATHER IN A DELICATE
SHADE OF BEIGE.



ASSAL SOFA
INANDA POUF
TURKANA LOW TABLES
MAUI LOW TABLE
WALL SECTIONAL BOOKCASE
WATAMU CONSOLE
TRINIDAD MIRROR
CORAL FLOOR LAMP





WILD ARMCHAIRS
MERU LOW TABLE
UNITED STATES OF CAVALLI PRINT
FLAG RUG





SENSUAL COMFORT AND ELEGANT COZINESS. WITH ITS SINUOUS LINES AND SOFT SHAPES, KRUGER SOFA EXPRESSES A CONCEPT OF WELCOMING LUXURY. THE EXTREME CARE IN THE WORKMANSHIP IS VISIBLE IN THE SARTORIAL DETAILS, SUCH AS THE GOLDEN LINE THAT RUNS ALONG THE PERIMETER OF THE SOFA.



KRUGER SOFA
CURAÇAO ARMCHAIR
DAVIS ARMCHAIRS
LIMBO POUF
SAHARA LOW TABLES
PAJE LOW TABLES
CORAL FLOOR LAMP
MAYA WALL LAMPS
UNITED STATES OF CAVALLI PRINT
FLAG RUG





KRUGER SOFA
PAJE LOW TABLES
FLAG RUG

KRUGER SOFA
DAVIS ARMCHAIRS
PAJE LOW TABLES
MAYA WALL LAMPS
FLAG RUG





CURACAO ARMCHAIR
LIMBO POUF
SAHARA LOW TABLES
FLAG RUG

CURAÇAO ARMCHAIR
PAJE LOW TABLE
CORAL FLOOR LAMP
FLAG RUG



CONTEMPORARY SHAPES
AND VINTAGE TOUCHES
FOR THE ARUBA SOFA,
SUCH AS THE 70S' VIBE
OF THE LIGHT LEGS IN
TRANSPARENT PLEXIGLASS.
A SARTORIAL ELEMENT IS
GIVEN BY THE STITCHING
ON THE ARMRESTS,
RECALLING THE ICONIC
ROBERTO CAVALLI
LEATHER GOODS.



ARUBA SECTIONAL SOFA
CAICOS SOFA
CURAÇAO BERGERE
RAGALI/RAGALI.2 LOW TABLES
VANUATU LOW TABLE
ACAPULCO BOOKCASE
UMA SCREEN
SIORAF CHANDELIER
ANTIGUA TABLE LAMP
CHARLIZE RUG



ARUBA SECTIONAL SOFA
VANUATU LOW TABLE
ACAPULCO BOOKCASE
ANTIGUA TABLE LAMP
CHARLIZE RUG



CAICOS SOFA
CURAÇÃO BERGERE
RAGALI/RAGALI.2 LOW TABLES
VANUATU LOW TABLE
ACAPULCO BOOKCASE
UMA SCREEN
ANTIGUA TABLE LAMP
CHARLIZE RUG



CAICOS SOFA
RAGALI/RAGALI.2 LOW TABLES
CHARLIZE RUG



CAICOS SOFA
CURAÇAO BERGERE
RAGALI.2 LOW TABLE
ANTIGUA TABLE LAMP
UMA SCREEN





THE TEMPTING SNAKE,
AN ALLUSION TO
THE ORIGINAL SIN,
HAS ALWAYS BEEN A
POWERFUL SYMBOL OF
THE MAISON.
IN THE VIKTORIA SOFA, THE
SNAKE ALSO BECOMES
A SCENOGRAPHIC
METALLIC ELEMENT
ADDING A DECORATIVE
NOTE TO THE PIECE OF
FURNITURE.



VICTORIA SECTIONAL SOFA
INANDA ARMCHAIRS
TURKANA LOW TABLES
COOPER LOW TABLE
LOGIPI FLOOR LAMP
CHARLIZE RUG





VIKTORIA SECTIONAL SOFA
INANDA ARMCHAIRS
TURKANA LOW TABLE
COOPER LOW TABLES
CHARLIZE RUG

VIKTORIA SECTIONAL SOFA
TURKANA LOW TABLES
CHARLIZE RUG



INANDA ARMCHAIR
COOPER LOW TABLE
LOGIPI FLOOR LAMP
CHARLIZE RUG





SNAKE ARMCHAIR
LOGIPI FLOOR LAMP
CHARLIZE RUG



LUXURY AND
GLAMOUR.
A SETTING INFUSING
A FEELING OF
SOPHISTICATION,
ENHANCED BY THE
MANIACAL ATTENTION
TO DETAILS.
LIKE IN CLIFTON SOFA,
A STUNNING PIECE
OF FURNITURE WITH A
TEXTURAL UPHOLSTERY
AND BRIGHT FEET.



CLIFTON SOFA
CURAÇAO BERGERE
LIMBO POUF
SIORAF LOW TABLE
VANUATU LOW TABLE
VAAL SIDEBOARD
BRICK TABLE LAMP
UMA RUG



CLIFTON SOFA
VANUATU LOW TABLE
SIORAF LOW TABLE
BRICK TABLE LAMP
UMA RUG



A WIDE AND COMFORTABLE SEAT FOR KINGSTON MODULAR SOFA. THE PECULIAR MANUFACTURING OF THE SEATBACK IS THE MAIN FEATURE, WHILE THE PLEATED ELEMENTS CREATE A PERFECT COMBINATION BETWEEN EXPERIMENTAL DESIGN AND TAILORED DECORATION.



KINGSTON SOFA / SECTIONAL SOFA
KEY WEST ARMCHAIR
LIMBO POUF
COOPER LOW TABLE
INAGUA LOW TABLES
VANUATU LOW TABLE
SIORAF CONSOLE
TRINIDAD MIRROR
ANTIGUA CHANDELIER
BRICK FLOOR LAMP
UMA RUG





KINGSTON SOFA / SECTIONAL SOFA
KEY WEST ARMCHAIR
LIMBO POUF
COOPER LOW TABLE
INAGUA LOW TABLES
VANUATU LOW TABLE
BRICK FLOOR LAMP
UMA RUG



KINGSTON SOFA
INAGUA LOW TABLES
VANUATU LOW TABLE
ANTIGUA CHANDELIER
UMA RUG



KINGSTON SOFA
LIMBO POUF
INAGUA LOW TABLE
VANUATU LOW TABLE
UMA RUG



KEY WEST ARMCHAIR
SIORAF CONSOLE
TRINIDAD MIRROR
BRICK FLOOR LAMP



ELEGANCE AND COMFORT.
MANHATTAN IS A DESIGN
PIECE RAISED OFF THE
FLOOR ON THIN GOLD
FINISHED LEGS, FOR A
SCULPTURAL EFFECT.
ITS SHAPE GIVES A COZY
SENSATION OF INVITING
WARMTH AND SOFTNESS,
PERFECTLY MIXING RELAX
AND SOPHISTICATION.



MANHATTAN SOFA
MANHATTAN ARMCHAIRS
KEY WEST ARMCHAIRS
LIMBO POUF
RAGALI LOW TABLE
TURKANA LOW TABLES
YOA LOW TABLE
SIORAF CONSOLE
SIORAF 3 FLOOR LAMP
SILK DECORATIVE ITEM
UMA RUG





MANHATTAN SOFA
YOA LOW TABLE



MANHATTAN ARMCHAIRS
RAGALI LOW TABLE
SIORAF.3 FLOOR LAMP
UMA RUG



SENSUALITY AND
REFINEMENT MEET IN
THE SMOKING.2 SOFA.
THE PERFECTION OF
THE PROPORTIONS
ACCOMPANIES THE
SPECIAL DECORATIVE
FOLD ON THE ARMREST,
HANDCRAFTED BY
SKILLFUL ARTISANS.
A PIECE OF FURNITURE
DESIGNED TO CREATE A
COZY RELAXING CORNER
IN ANY LIVING AREA.



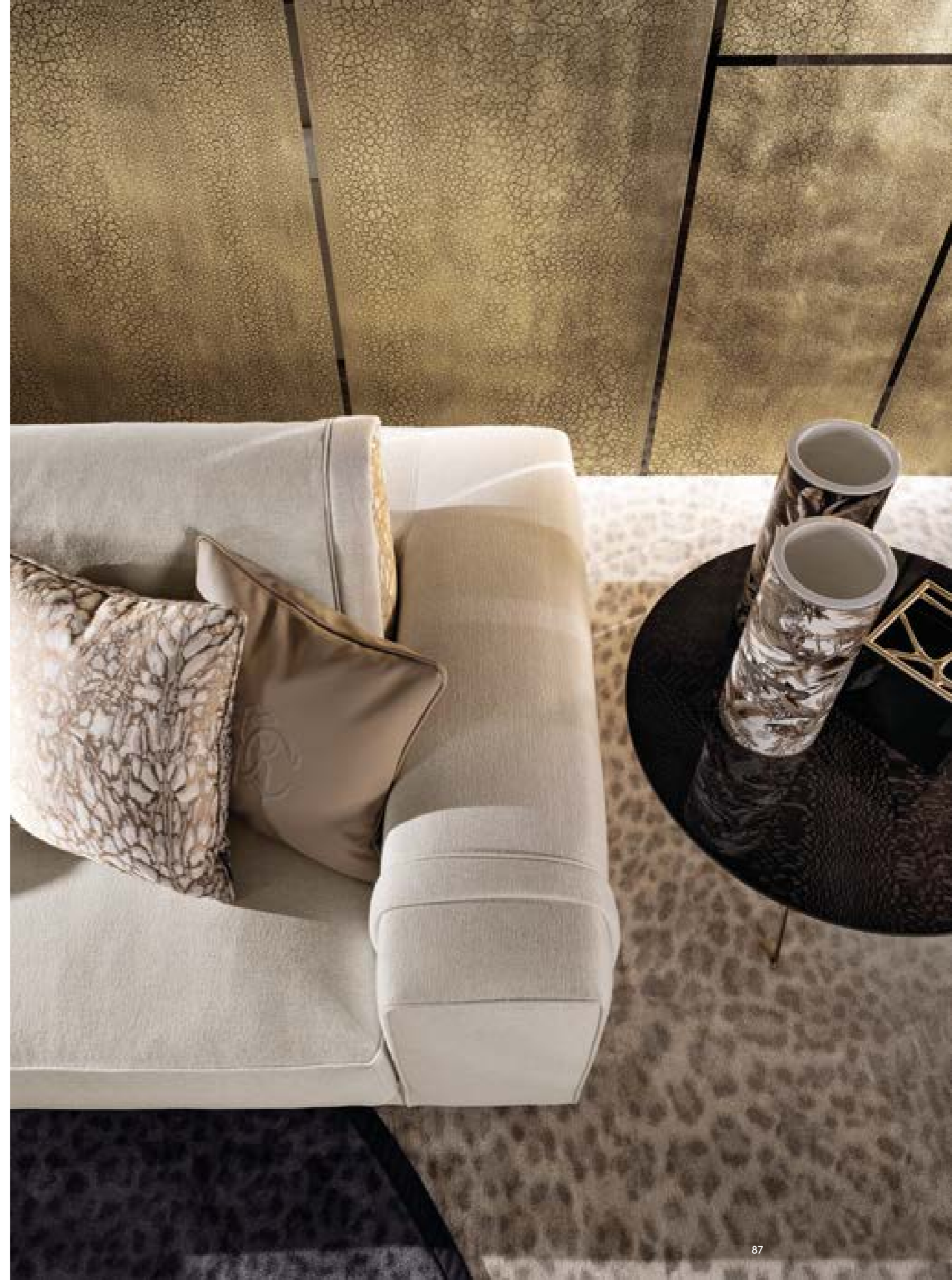
SMOKING.2 SOFA
LIMBO POUF
COOPER LOW TABLE
RAGALI.2 LOW TABLE
LOGIPI FLOOR LAMP
ARTWORKS DECORATIVE ITEMS
AUDREY RUG



SMOKING.2 SOFA
COOPER LOW TABLE
RAGALI.2 LOW TABLE
LOGIPI FLOOR LAMP
ARTWORKS DECORATIVE ITEMS
AUDREY RUG



SMOKING.2 SOFA
COOPER LOW TABLE
RAGALI.2 LOW TABLE
AUDREY RUG



A ONE-OF-A-KIND,
BOLD SOFA: THE
FLAWLESS EXPRESSION
OF THE TRUE ESSENCE
OF THE BRAND.
UPHOLSTERED IN
TEXTURAL AND
LUXURIOUS COCCO
LEATHER, CLIFTON SOFA
COMBINES COMFORT
AND UNEXPECTED
TOUCHES, ALL IN ONE.





CLIFTON SOFA
CLIFTON ARMCHAIRS
TIFNIT ARMCHAIR
WATAMU LOW TABLES
SIORAF.3 FLOOR LAMP
TIGER RUG



CLIFTON SOFA
WATAMU LOW TABLES
SIORAF.3 FLOOR LAMP
TIGER RUG



CLIFTON ARMCHAIR
WATAMU LOW TABLES
SIORAF.3 FLOOR LAMP



TIFNIT ARMCHAIR
WATAMU LOW TABLES
TIGER RUG

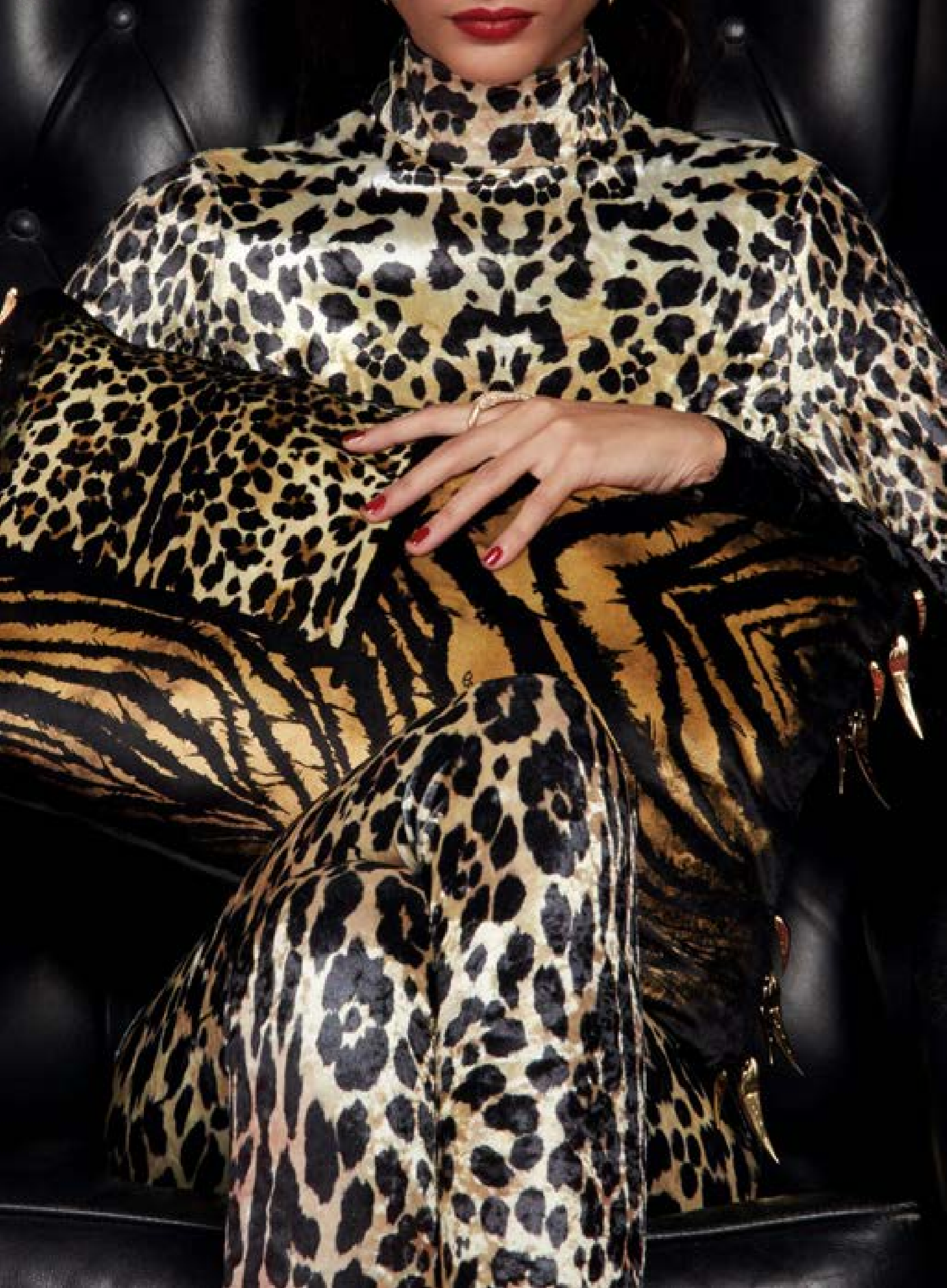


DARLINGTON.2 SOFA
SHOWCASES SARTORIAL
DETAILS SUCH AS THE
CAPITONNÉ FINISHING
AND POWERFUL
SYMBOLIC ELEMENTS, LIKE
THE ANIMAL PATTERNS IN
THEIR NATURAL TONES.
FOR A LIVING ROOM WITH
AN UNPRECEDENTED
REBELLIOUS SPIRIT.



DARLINGTON. 2 SECTIONAL SOFA
DARLINGTON SOFA
WINGS ARMCHAIR
JIFE LOW TABLES
MAUI LOW TABLE
ACAPULCO BOOKCASE
KELBIA STAND MIRROR
ANTIGUA TABLE LAMP
FLAG RUG





DARLINGTON.2 SECTIONAL SOFA
JIPE LOW TABLES
KELBIA STAND MIRROR
ANTIGUA TABLE LAMP
FLAG RUG



DARLINGTON.2 SECTIONAL SOFA
WINGS ARMCHAIR
JIPE LOW TABLES
KELBIA STAND MIRROR
FLAG RUG



DARLINGTON SOFA
JIPE LOW TABLES
MAUI LOW TABLE
ACAPULCO BOOKCASE
ANTIGUA TABLE LAMP
FLAG RUG



DARLINGTON SOFA
MAUI LOW TABLE
FLAG RUG



WINGS ARMCHAIR
JIPE LOW TABLE
FLAG RUG







WITH ITS APPEALING
DESIGN, INANDA SOFA
MIXES SILKS WITH
ANIMAL PATTERNS AND
LEATHER FEATURING
A SPECIAL PLEATING
WITH METALLIC
PIERCINGS. A PIECE
OF FURNITURE WITH
AN INCOMPARABLE
AESTHETIC TO ENLIVEN
A SOPHISTICATED
LIVING ROOM.



INANDA SOFA
CURAÇAO BERGERES
FIJI ARMCHAIR
INANDA POUF
COOPER LOW TABLE
MAUI LOW TABLE
SIORAF LOW TABLES
KIOGA CHANDELIER
TIGER RUG



INANDA SOFA
INANDA POUF
COOPER LOW TABLE
SIORAF LOW TABLE
TIGER RUG





CURAÇAO BERGERES
COOPER LOW TABLE
SIORAF LOW TABLE
KIOGA CHANDELIER
TIGER RUG

A SOFA THAT EMBODIES THE
AESTHETIC OF ROBERTO
CAVALLI HOME INTERIORS.
MALAWI IS A PIECE OF
FURNITURE WITH A FEMININE
AND ULTRA-CHIC STYLE,
EXPRESSED IN THE
SEDUCTIVE LINES AND IN
THE SENSUALITY OF THE
LEATHER UPHOLSTERY AND
DECORATIVE FRINGES.



MALAWI SOFA
INANDA POUF
RAGALI LOW TABLES
SIORAF CHANDELIER
FLAG RUG



MALAWI SOFA
MACLAINE ARMCHAIRS
INANDA POUF
RAGALI LOW TABLES
KELBIA STAND MIRROR
SIORAF CHANDELIER
FLAG RUG



MACLAINE ARMCHAIR
SOHO CONSOLE
SILK DECORATIVE ITEM





AN EMOTIONAL TRIP TO
THE HEART OF THE
AFRICAN SAVANNAH.
BAOBAB IS SCULPTURAL
TABLE FEATURING A
TOP MADE UP OF FIVE
IRREGULARLY SHAPED
MARBLE ELEMENTS THAT
RECALL THE FOLIAGE OF
THE BAOBAB AND A BASE
OF CYLINDRICAL TUBES
REMINING THE TRUNK
OF THE TREE.



SHIRA CHAIRS
BAOBAB DINING TABLE
KASAI SHOWCASE







A SCENOGRAPHIC AND CAPTIVATING DINING ROOM FURNISHED WITH COMORE TABLE AND BATTEN CHANDELIER. THE SCULPTURAL TOP OF THE TABLE IS CREATED THROUGH A COMPLEX PROCESS OF CRAFTSMANSHIP OF THE PORCELAIN STONEWARE, WITH INSERTS IN GOLD METAL THAT PRODUCE A GEOMETRIC DECORATIVE DESIGN.



INANDA CHAIRS
COMORE DINING TABLE
TONGA SIDEBOARD
TONGA BAR CABINET
BATTEN CHANDELIER
ARTWORK DECORATIVE ITEM
UMA RUG



INANDA CHAIRS
COMORE DINING TABLE
TONGA SIDEBOARD
BATTEN CHANDELIER
ARTWORK DECORATIVE ITEM
UMA RUG



INANDA CHAIRS
COMORE DINING TABLE
TONGA BAR CABINET
UMA RUG





IN AN UNEXPECTED PLAY OF DIFFERENT ELEMENTS, THE EXTRAORDINARY GLOSSY GOLD SCULPTURE AT THE BASE OF THE ANTIGUA TABLE LAYS ON THE GREY CARBALHO TOP A SCENIC AND IMPACTFUL ELEMENT FOR A CONTEMPORARY DINING ROOM.



KIVU CHAIRS
ANTIGUA DINING TABLE
VAAL SIDEBOARD
ANTIGUA CHANDELIERS
SIORAF.3 TABLE LAMP
SILK DECORATIVE ITEM
UMA RUG



KIVU CHAIRS
ANTIGUA DINING TABLE
ANTIGUA CHANDELIERS
SIORAF.3 TABLE LAMP
UMA RUG





VAAL SIDEBOARD
SIORAF.3 TABLE LAMP
SILK DECORATIVE ITEM

A SPECTACULAR
DINING ROOM WITH
SIORAF TABLE AS MAIN
PROTAGONIST.
A PIECE OF FURNITURE
WITH HIGH ARTISTIC
VALUE AND A STRONG
ARTISANAL COMPONENT,
CHARACTERIZED BY
THE PRESENCE OF AN
ELEGANT BASE MADE
OF CAST BRASS HAND
CHISELLED AND GOLD-
PLATED, WHOSE DESIGN
REMINDS OF THE TYPICAL
GIRAFFE PATTERN OF
THE BRAND.



KEY WEST CHAIRS
SIORAF DINING TABLE
AZINGO CABINET
LIPARI CHANDELIER
SILK DECORATIVE ITEM







TEIDE CHAIRS
SIORAF DINING TABLE
VAAL SIDEBOARD
SAHARA MIRROR
MAUI WALL LAMPS
FLAG RUG



TEIDE CHAIRS
SIORAF DINING TABLE
VAAL SIDEBOARD
SAHARA MIRROR
FLAG RUG



TEIDE CHAIRS
SIORAF DINING TABLE
VAAL SIDEBOARD
SAHARA MIRROR
MAUI WALL LAMPS
FLAG RUG



A SETTING WITH A GREAT PERSONALITY, BLURRING THE LINE BETWEEN ART AND DESIGN. KIBO IS A TABLE OF SCENIC IMPACT, FEATURING A SPECIAL COMBINATION OF FINE MATERIALS AND EVOCATIVE SHADES THAT GIVES LIFE TO SOPHISTICATED PLAYS OF LIGHT AND REFLECTIONS.



SHIRA CHAIRS
KIBO DINING TABLE
SOIRA SIDEBOARD
WITCH MIRROR
KIOGA CHANDELIER



SHIRA CHAIRS
KIBO DINING TABLE
KIOGA CHANDELIER





WITH ITS INTERESTING
FIGURE, NYOS IS A TABLE
CHARACTERIZED BY
A PRECIOUS MARBLE
TOP WITH AN IRREGULAR
SHAPE AND A METAL BASE
MADE UP OF AN ORIGINAL
GAME OF CURVED LINES.



MACLAINE CHAIRS
NYOS DINING TABLE
KASAI SHOWCASE
LIPARI CHANDELIER





DEDICATED TO THE MOST RELAXING & FUN MOMENTS – ALWAYS WITH A SASSY ATTITUDE – KARIBA BAR AREA BOASTS A LEATHER UPHOLSTERY WITH QUILTING RECALLING THE GIRAFFE PATTERN. THE MARBLE TOP COMPLETES THE GLAM-CHIC CHARM OF THE SETTING.



KARIBA BAR COUNTER
KEY WEST STOOLS
SIORAF CHANDELIERS
AUDREY RUG



KARIBA BAR COUNTER
KEY WEST STOOLS
SIORAF CHANDELIERS
AUDREY RUG



KINTSUGI IS THE ANCIENT JAPANESE ART OF GIVING NEW LIFE TO FRAGMENTS OF BROKEN OBJECTS, ENHANCING THE NEW RIBS CREATED. THIS IS THE INSPIRATION BEHIND THE HEADBOARD OF THE ELGON BED, WHERE THE REFINED DECORATIONS ALSO BRING TO MIND THE TYPICAL ANIMALIER PATTERNS OF THE CAVALLI WORLD.



ELGON BED
LIMBO POUF

TRINIDAD NIGHT TABLE
SAHARA LOW TABLE
MORNE CONSOLE
KEY WEST CHAIR

WITCH MIRROR
SIORAF CHANDELIER
UMA RUG



ELGON BED
TRINIDAD NIGHT TABLE
SIORAF CHANDELIER
UMA RUG



ELGON BED
LIMBO POUF
TRINIDAD NIGHT TABLE
MORNE CONSOLE
WITCH MIRROR



HAMPTONS BED PERFECTLY
EXPRESSES THE DNA OF
THE FASHION MAISON, A
TRIUMPH OF SOPHISTICATED,
CHARACTER AND SENSUALITY.
REFINED MANUFACTURING,
ELEGANT SHAPES AND
UNMISTAKABLE DECORATIVE
NOTES BECOME INSTRUMENTS
OF EVERYDAY SEDUCTION.



SMOKING BED
DAVIS ARMCHAIR
HERA.2 POUF
WADDI POUF
MARTINICA NIGHT TABLES
SAHARA STAND MIRROR
ANTIGUA TABLE LAMP
LIPARI CHANDELIER



SMOKING BED
MARTINICA NIGHT TABLE
ANTIGUA TABLE LAMP



SMOKING BED
DAVIS ARMCHAIR
MARTINICA NIGHT TABLE
SAHARA STAND MIRROR



POWERFUL SYMBOLS
AND ELOQUENT DETAILS.
IN THE NILO BED, THE
SNAKE LENDS ITS SHAPE
TO THE DECORATIVE METAL
CHAIN THAT ENRICHES THE
HEADBOARD. A SENSUAL
AND MEANINGFUL ELEMENT
WHICH HAS ALWAYS BEEN
PART OF THE ROBERTO
CAVALLI UNIVERSE.



NILO BED
SIORAF ARMCHAIR
MALAWI POUF
TRINIDAD NIGHT TABLES
SAHARA.6 DRAWER UNIT
LOGIPI TABLE LAMPS
LOGIPI FLOOR LAMP
ARTWORKS DECORATIVE ITEMS
CHARLIZE RUG





NILO BED
TRINIDAD NIGHT TABLES
LOGIPI TABLE LAMPS





THE TIMELESS
COMBINATION OF BLACK
LEATHER AND GOLD.
IN THE MALAWI BED, THIS
POWERFUL BLEND DEFINES
THE SARTORIAL SKILLS OF
THE BRAND, TO BE FOUND
ALSO IN THE DECORATIVE
LEATHER FRINGES
ENRICHING THE BASE.



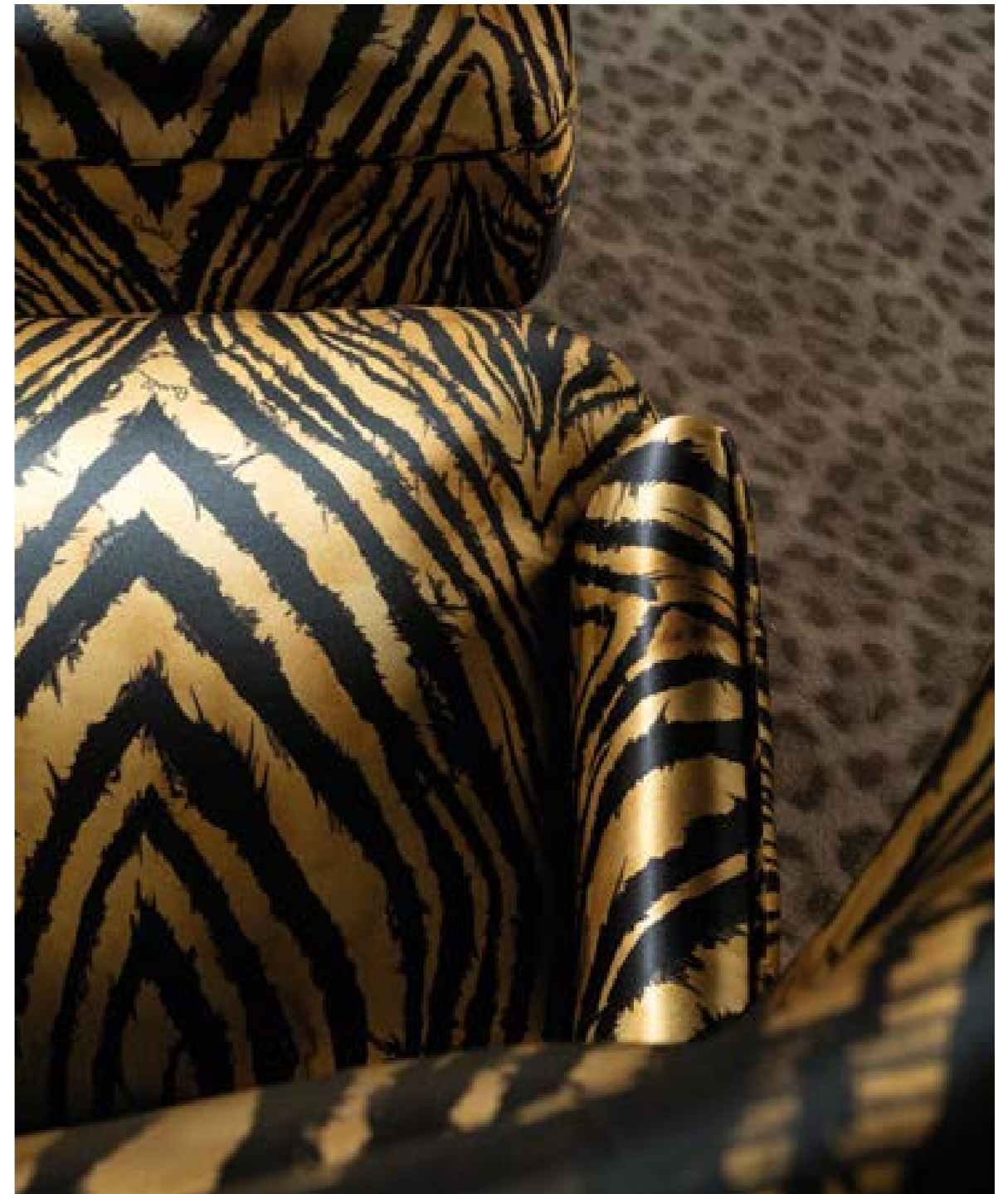
MALAWI BED
WILD POUF
GUAM BERGERE/FOOT REST
DORIAN.2 NIGHT TABLES
COOPER LOW TABLE
LOGIPI TABLE LAMP
WILD NARROW TABLE LAMP
TIGER RUG



MALAWI BED
WILD POUF
DORIAN.2 NIGHT TABLE
LOGIPI TABLE LAMP
WILD NARROW TABLE LAMP
TIGER RUG



GUAM BERGERE/FOOT REST
COOPER LOW TABLE
WILD NARROW TABLE LAMP





BOLD STYLE AND ROCK SPIRIT FOR MORNE BED, THE UNDISPUTED STAR OF THE NIGHT AREA. SYMBOLIC ELEMENTS LIKE ROBERTO CAVALLI LOGO EMBROIDERED IN CENTRAL POSITION, TOGETHER WITH THE ARTISANAL LEATHER MANUFACTURING AND THE ANIMAL PATTERNS ENHANCE ITS DARING CHARACTER.



MORNE BED
WADDI POUF
MORNE NIGHT TABLES
KELBIA STAND MIRROR
ANTIGUA TABLE LAMP
KIOGA CHANDELIER
TIGER RUG



MORNE BED
MORNE NIGHT TABLE



WADDI POUFS
MORNE DRAWER UNIT
MORNE NIGHT TABLE



WILD POUF
MORNE DRAWER UNIT
LOGIPI TABLE LAMP
ARTWORK DECORATIVE ITEM
TIGER RUG



VANITY, CULT OF BEAUTY
AND PASSION FOR FASHION
FIND THEIR PERFECT
BALANCE IN NAKURU.
A WALK-IN CLOSET MADE UP
OF PANELS UPHOLSTERED
WITH PRECIOUS SILKS
OF THE COLLECTION,
CHESTS OF DRAWERS AND
COMFORTABLE SHELVING.
A CELEBRATION OF THE
SOPHISTICATED SPIRIT
OF THE BRAND.









ANTIGUA DESK, WITH ITS
SCULPTURAL DESIGN, IS
THE PERFECT CENTERPIECE
FOR PRESTIGIOUS
WORKING SPACES.
THE TOP AND CHEST OF
DRAWERS FEATURE
A GLOSSY GREY CARBALHO
FINISHING. THE SNAKE
HANDLES ARE A SIGNATURE
ELEMENT OF THE LINE.



ANTIGUA DESK
KEY WEST CHAIR
WALL.2 MODULAR BOOKCASE
WATAMU CONSOLE
TRINIDAD MIRROR
ASSAL SOFA
INANDA POUF
LOGIPI TABLE LAMP







ACCESSORIES MAKE
THE DIFFERENCE.
ROBERTO CAVALLI HOME
INTERIORS SELECTION OF
COMPLEMENTS ALLOWS
YOU TO ADD THE PERFECT
TOUCH TO YOUR HOME
DÉCOR, CREATING AN
ENVIRONMENT WITH
A BOLD, OPULENT
AND GLAMOUROUS
ATMOSPHERE





WILD DOG BED - SQUARE DOG BED
SAHARA LOW TABLE
UNITED STATES OF CAVALLI PRINT





SOFAS / ARMCHAIRS

ARUBA (page 27, 29-31)



Sectional sofa with structure in poplar wood and expansive polyurethane foam. Upholstery in fabric cat. B Velvet Paul Jaguar Printed col. 010 Silver. Optional stripes on the seat. Legs in transparent plexiglass.

**C.ARU.213.AHX + C.ARU.213.DHX
+ C.COM.934.BMX (2X)**
L 380 D 170 H 83 cm
L 149 3/4 D 66 3/4 H 32 1/4 in

ASSAL (page 5-9, 248)



3-seater sofa with structure in solid poplar wood, multilayer pine wood and expansive polyurethane foam. Upholstery in leather cat. A Sauvage col. Avorio with decorative stitching along the perimeter. Optional RC Snake embroidery on the backrest.

C.ASL.211.AAX
L 295 D 122 H 71 cm
L 116 D 47 3/4 H 28 in

CAICOS (page 28, 32-33, 35, 37-39)



3-seater sofa with structure in poplar wood and expansive polyurethane foam. Upholstery in leather cat. A Hippo col. 6503. Engraved RC logo on metal feet with gold finishing.

C.CAI.211.AAX
L 270 D 110 H 84 cm
L 106 1/4 D 43 1/4 H 33 in

CLIFTON (page 55-59)



3-seater sofa with structure in solid poplar wood, solid fir wood with Masonite and expansive polyurethane foam. Structure and seat upholstery in fabric cat. A Silvana Scattered Sand. Back cushions in fabric cat. A Jacquard Deni col. B1. Feet in laser-cut iron with Gold finishing.

C.CLI.211.AGX
L 283 D 100 H 76 cm
L 111 1/4 D 39 1/4 H 30 in

CLIFTON (page 89-93)



3-seater sofa with structure in solid poplar wood and solid fir wood. Seat in expansive polyurethane foam and back cushions in goose down. Upholstery in leather cat. B Cocco Vintage col. 28. Feet in laser-cut iron with Gold finishing.

C.CLI.211.ABX + C.COM.962.CMX
L 283 D 100 H 76 cm
L 111 1/4 D 39 1/4 H 30 in

CLIFTON (page 90, 95)



Armchair with structure in solid poplar wood and solid fir wood. Upholstery in leather cat. A Vintage col. 3005, with "Spiga" quilting on the internal and external structure. Seat in expansive polyurethane foam with upholstery in leather cat. B Cocco Vintage col. 28. Back cushion in goose down with upholstery in leather cat. B Cocco Vintage col. 28. Feet in laser-cut iron with Gold finishing.

C.CLI.221.ABX + C.COM.962.DMX
L 89 D 96 H 76 cm
L 35 D 37 3/4 H 30 in

DARLINGTON (page 101, 106-107, 109)



2-seater sofa with structure in solid poplar wood and multilayer pine wood. Seat in expansive polyurethane foam with upholstery in leather cat. B Touch col. Black with capitonné. Roll cushions and armrests in expansive polyurethane foam with upholstery in leather cat. B Touch col. Black. Piping and decorative belts in leather cat. B Nabuk col. Cream. Back cushions in goose down with upholstery in fabric cat. B Silk Satin RC Wild Jaguar col. Natural. Piping in leather cat. B Nabuk col. Cream. Feet in laser-cut metal with Brushed Bronze finishing.

C.DRL.211.BBX
L 246 D 126 H 80 cm
L 96 3/4 D 49 1/2 H 31 1/2 in

DARLINGTON.2 (page 99-105)



C.DR2.213.ABX + C.DR2.213.FBX + C.COM.964.CMX

L 468 D 372 H 80 cm
L 184 1/4 D 146 29/64 H 31 1/2 in

Sectional sofa with structure in solid poplar wood and multilayer pine wood. Seat in expansive polyurethane foam with upholstery in leather cat. B Touch col. Black. Roll cushion in expansive polyurethane foam with upholstery in fabric cat. B Silk Satin RC Wild Jaguar col. Natural. Piping and decorative belts in leather cat. B Nabuk col. Cream. Cushion with upholstery in fabric cat. B Silk Satin RC Wild Jaguar col. Natural. Piping in leather cat. B Nabuk col. Cream. Base in MDF with Brushed Bronze finishing.

INANDA (page 117-121)



C.IND.211.ABX

L 260 D 102 H 90 cm
L 102 1/4 D 40 H 35 1/4 in

3-seater sofa with structure in solid poplar wood, solid fir wood and expansive polyurethane foam. External upholstery in leather cat. B Touch col. Black. Internal and seat upholstery in fabric cat. B Velvet Paul Jaguar Printed col. 406 Black. Back cushions upholstery in fabric cat. B Jacquard Josephine col. Black. Decorative elements with Gold finishing. Base in MDF with Gold finishing.

INANDA (page 42, 44, 48-51)



C.IND.221.ABX

L 77 D 76 H 80 cm
L 30 1/4 D 29 3/4 H 31 1/2 in

Armchair with structure in poplar multilayer wood and expansive polyurethane foam. External upholstery in leather cat. B Nabuk col. Ash Grey. Internal upholstery in fabric cat. B Velvet Paul Python Printed col. 010 Silver. Base and piercing with Gold finishing.

KINGSTON (page 61, 63b, 66-67, 69)



C.KIN.211.BBX

L 242 D 124 H 82 cm
L 95 1/4 D 48 3/4 H 32 1/4 in

2-seater sofa with structure in solid poplar wood, solid pine wood and expansive polyurethane foam. Upholstery in leather cat. B Nabuk col. Nut.

KINGSTON (page 62, 64-65)



C.KIN.213.KBX + C.KIN.213.HHX + C.KIN.213.FHX + C.KIN.213.RBX (2x) + C.KIN.213.EHX + C.KIN.213.GHX + C.KIN.213.TBX

L 406 D 214 H 62 cm
L 159 3/4 D 84 1/4 H 24 1/2 in

Sectional sofa with structure in solid poplar wood, solid pine wood and expansive polyurethane foam. Seat and backrest cushions upholstery in fabric cat. B Jacquard Halle col. White-Beige, fabric cat. B Jacquard Anne col. White-Beige and leather cat. B Touch col. Sand. Armrests and backrest upholstery in leather cat. B Touch col. Sand and leather cat. B Nabuk col. Nut.

KRUGER (page 15-21)



C.KRU.211.ABX

L 290 D 107 H 74 cm
L 114 1/4 D 42 H 29 1/4 in

3-seater sofa with structure in multilayer poplar wood, multilayer pine wood and expansive polyurethane foam. Upholstery in leather cat. A Nabuk col. Nut, with piping in metal gold thread.

MALAWI (page 125-128)



C.MAW.213.ABX + C.MAW.213.BBX

L 260 D 100 H 64 cm
L 102 1/2 D 39 1/2 H 27 1/4 in

Sectional sofa with structure in solid poplar wood and expansive polyurethane foam. Upholstery in leather cat. B Touch col. Black. Metal decorative elements with Gold finishing.

MANHATTAN (page 73-77)



C.MAN.211.CGX

L 263 D 112 H 85 cm
L 103 1/2 D 44 H 33 1/2 in

3-seater sofa with structure in solid poplar wood and expansive polyurethane foam. Upholstery in fabric cat. A Anna col. Sophisticated Neutral. Feet in laser-cut metal with Brushed Gold finishing.

MANHATTAN (page 75b, 78-79)



C.MAN.221.AGX

L 108 D 95 H 64 cm
L 42 1/2 D 37 1/2 H 25 in

Armchair with structure in solid poplar wood and expansive polyurethane foam. Upholstery in fabric cat. A Anna col. Sophisticated Neutral. Feet in laser-cut metal with Brushed Gold finishing.

SMOKING.2 (page 81-85, 87)



C.SM2.211.AGX

L 260 D 113 H 60 cm
L 102 1/2 D 44 1/2 H 23 1/2 in

3-seater sofa with structure in solid poplar wood and expansive polyurethane foam. Upholstery in fabric cat. A Anna col. Sophisticated Neutral. Back cushions exterior upholstery in jacquard fabric cat. A Deni col. A1. Base in MDF with matt Black Lacquered finishing.

VIKTORIA (page 41-45, 47)



C.VIK.213.ABX + C.VIK.213.EBX + C.VIK.213.FBX

L 500 D 410 H 70 cm
L 196 3/4 D 161 1/2 H 27 1/2 in

Sectional sofa with structure in metal and poplar wood. Seat upholstery in fabric cat. A Jacquard Deni col. B1. Backrest cushions upholstery in leather cat. B Nabuk col. Ash Grey. Feet with Gold finishing and metal shelves with Brushed Bronze finishing.

ARMCHAIRS

CURAÇÃO (page 16, 22, 25)



C.CUR.221.AGX

L 100 D 91 H 72 cm
L 39 1/4 D 35 3/4 H 28 1/4 in

Armchair with structure in poplar wood and expansive polyurethane foam. Upholstery in fabric cat. A Velvet RC Zebrina col. Natural. Feet in metal with Gold finishing.

CURAÇÃO (page 29, 33, 36, 57)



C.CUR.223.AGX

L 81 D 92 H 102 cm
L 31 3/4 D 36 1/4 H 40 in

Bergere with structure in poplar wood and expansive polyurethane foam. Upholstery in fabric cat. A Jacquard Meg col. B2. Feet in metal with Gold finishing.

CURAÇAO (page 118, 122-123)



C.CUR.223.AHX

L 81 D 92 H 102 cm
L 31 3/4 D 36 1/4 H 40 in

Bergere with structure in poplar wood and expansive polyurethane foam. Internal upholstery in fabric cat. B velvet Paul Jaguar Printed col. 406 Black. External upholstery in fabric cat. B velvet Paul col. 406 Black. Feet in metal with Gold finishing.

DAVIS (page 204, 208)



C.DAV.221.AHX

L 68 D 90 H 82 cm
L 27 1/4 D 35 1/2 H 32 1/4 in

Armchair with structure in metal with Brushed Dark Bronze finishing. Seat and backrest in multilayer poplar wood and expansive polyurethane foam. Upholstery in fabric cat. B Silk Satin RC Karen col. 2.

DAVIS (page 17, 21)



C.DAV.221.AGX

L 68 D 90 H 82 cm
L 26 3/4 D 35 1/2 H 32 1/3 in

Armchair with structure in metal with Gold finishing. Seat and backrest in multilayer poplar wood and expansive polyurethane foam. Upholstery in fabric cat. A Jacquard Monogram col. Champagne.

FIJI (page 119)



C.FIJ.221.AHX

L 75 D 90 H 82 cm
L 29 1/2 D 35 1/2 H 32 1/4 in

Armchair with structure in poplar wood and expansive polyurethane foam. Upholstery in fabric cat. B Silk Satin RC Wild Zebra col. Natural. Base in laser-cut metal with Brushed Bronze finishing.

GUAM (page 220, 224-225)



C.GUA.223.AHX

L 68 D 80 H 104 cm
L 26 3/4 D 31 1/2 H 41 in



C.GUA.222.AHX

L 60 D 45 H 39 cm
L 31 1/2 D 26 3/4 H 41 in

Bergere and foot rest with structure in multilayer poplar wood and expansive polyurethane foam. Upholstery in fabric cat. B Silk Satin RC Wild Zebra col. Natural. Feet in laser-cut metal with Gold finishing.

KEY WEST (page 63-64, 71, 74)



C.KEY.221.AGX

L 79 D 87 H 84 cm
L 31 D 34 H 33 in

Armchair with structure in curved multilayer wood and expansive polyurethane foam. Upholstery in fabric cat. A Velvet RC Zebrina col. Natural. Back with steel slab in Gold finishing. Legs in solid beech wood with Embossed Black Lacquered finishing. Swivel mechanism.

MACLAINE (page 129-131)



C.MAC.221.AHX

L 100 D 87 H 90 cm
L 39 1/2 D 34 1/4 H 35 1/2 in

Armchair with structure in poplar wood and expansive polyurethane foam. Upholstery in fabric cat. B Silk Satin RC Wild Zebra col. Natural with piping in leather cat. B Touch col. Black. Base in laser-cut metal with Gold finishing.

PAPEETE (page 114-115)



C.PAP.224.AGX + C.COM.841.CMX

L 176 D 63 H 84 cm
L 69 1/4 D 24 3/4 H 33 in

Chaise longue with structure in calendered iron tubing with Glossy Gold finishing. Seat in curved wood Esaflex® and variable thickness high density expansive polyurethane foam. Upholstery in fabric cat. A Velvet Wild Jaguar col. Natural. Headrest cushion in high density expansive polyurethane upholstered in leather cat. B Touch col. Black with RC Snake embroidery. Counterbalance in brass with Gold finishing and leather col. Black.

SIORAF (page 212)



C.SIO.221.ABX

L 97 D 94 H 77 cm
L 38 1/4 D 36 3/4 H 30 1/4 in

Armchair with structure in cast brass with Gold finishing. Seat in multilayer poplar wood and expansive polyurethane foam. Upholstery in leather cat. B Touch col. Sand.

SNAKE (page 52-53)



C.SNA.221.ABX

L 80 D 100 H 88 cm
L 31 1/2 D 39 1/4 H 34 1/2 in

Structure in poplar wood and foam. Upholstery in leather cat. B Tuscany col. Ivory with internal back in capitonné with metal plates in gold finishing. One central RC metal plate with Swarovski crystals in gold finishing. Snake arms and feet in cast brass in gold finishing.

TIFNIT (page 91b, 96-97)



C.TIF.221.ABI + C.COM.841.CMX

L 80 D 91 H 88 cm
L 31 1/2 D 35 3/4 H 34 1/2 in

Armchair with structure in poplar wood and expansive polyurethane foam. External upholstery in leather cat. B Touch col. Sand. Internal upholstery in fabric cat. A Velvet RC Tiger col. Beige. Structural lower-back cushion upholstered in leather cat. B Touch col. Black with RC Snake embroidery. Feet in tapered iron with Gold finishing.

WILD (page 10-11)



C.WIL.221.AB1

L 64 D 66 H 79 cm
L 25 D 26 H 31 in

Armchair with structure in Polimex. Seat in variable thickness high density expansive polyurethane foam. Upholstery in leather cat. B Touch col. Sand with metallic element in zama alloy with polished galvanic Gold finishing. Inner part of seat base upholstered in fabric cat. B Silk Satin RC Wild Jaguar col. Beige.

WILD (page 226-227)



C.WIL.221.AA1

L 64 D 66 H 79 cm
L 25 D 26 H 31 in

Armchair with structure in Polimex. Seat in variable thickness high density expansive polyurethane foam. Upholstery in leather cat. A Sauvage col. Tenebra with metallic element in zama alloy with polished galvanic Gold finishing. Inner part of seat base upholstered in fabric cat. B Silk Satin RC Wild Jaguar col. Natural.

WINGS (page 101, 105, 110-111)



C.WIN.221.ABX

L 145 D 105 H 75 cm
L 57 D 41 1/3 H 29 1/2 in

Armchair in multilayer poplar wood and expansive polyurethane foam. Upholstery in leather cat. B Cocco col. 5. Base in cast metal with Brushed Bronze finishing.

WINGS (page 112-113)



C.WIN.221.AGX
L 145 D 105 H 75 cm
L 57 D 41 1/3 H 29 1/2 in

Armchair in multilayer poplar wood and expansive polyurethane foam. Upholstery in fabric cat. A Velvet RC Wild Jaguar col. Natural. Base in cast metal with Brushed Gold finishing.

POUFS

HERA.2 (page 205)



C.HE2.222.AHX
L 50 D 50 H 47 cm
L 19 2/3 D 19 2/3 H 18 1/2 in

Pouf with structure in poplar wood and foam. Upholstery in fabric cat. B Silk Satin RC Karen col. 2. Base in MDF with matt Black Laquered finishing.

INANDA (page 6, 118, 121, 127, 129, 248, 252-253)



C.IND.222.ABX + C.COM.931.KMX
Ø 40 H 47 cm
Ø 15 1/2 H 18 1/2 in

Pouf with structure in solid poplar wood and expansive polyurethane foam. Seat upholstery in fabric cat. A Velvet RC Wild Jaguar col. Natural. Side upholstery in leather cat. B Touch col. Black. Metal elements and base with Gold finishing.

INANDA (page 127)



C.IND.222.ABX
Ø 40 H 47 cm
Ø 15 1/2 H 18 1/2 in

Pouf with structure in solid poplar wood and expansive polyurethane foam. Upholstery in leather cat. B Touch col. Black. Metal elements with Gold finishing. Wooden base lacquered in gold finishing.

LIMBO (page 16-17, 22-23)



C.LIM.222.HNX
Ø 82 H 40 cm
Ø 32 H 15 3/4 in

Pouf with structure in multilayer poplar wood, multilayer pine wood and expansive polyurethane foam. Upholstery with capitonné in fabric cat. B Jacquard Cheetah col. Black, fabric cat. A Paul col. 406 Black, leather cat. B Touch col. Sand and leather cat. B Tuscany col. Ivory. Base in MDF with matt Black Lacquered finishing.

LIMBO (page 63-64, 68, 83, 197, 201)



C.LIM.222.HNX
Ø 82 H 40 cm
Ø 32 H 15 3/4 in

Pouf with structure in multilayer poplar wood, multilayer pine wood and expansive polyurethane foam. Upholstery with capitonné in fabric cat. A Jacquard Deni col. AI, fabric cat. B Jacquard Audrey col. Natural, leather cat. B Touch col. Sand and leather cat. B Tuscany col. Ivory. Base in MDF with matt Black Lacquered finishing.

LIMBO (page 56, 75)



C.LIM.222.GBX
Ø 50 H 40 cm
Ø 19 1/2 H 15 3/4 in

Pouf with structure in multilayer poplar wood, multilayer pine wood and expansive polyurethane foam. Upholstery with capitonné in leather cat. B Tuscany col. Ivory. Base in MDF with matt Black Lacquered finishing.

MALAWI (page 212-213)



C.MAW.222.ABX
L 134 D 48 H 40 cm
L 52 3/4 D 19 H 15 3/4 in

Pouf with structure in solid poplar wood and expansive polyurethane foam. Upholstery in leather cat. B Touch col. Sand. Metal decorative elements with Gold finishing.

SHARPEI (page 240-241)



C.SHA.222.ABX
Ø 142 H 35 cm
Ø 56 H 13 2/3 in

Structure in poplar wood and foam. Upholstery in leather cat. B Touch col. Black. Central metal sphere in Gold finishings.

SIORAF (page 166)



C.SIO.222.ABX
Ø 40 H 49 cm
Ø 15 3/4 H 18 1/2 in

Pouf with structure in cast brass with Gold finishing. Seat in multilayer poplar wood and expansive polyurethane foam. Upholstery in leather cat. B Nabuk col. Anthracite and fur.

WADDI (page 205, 231, 234)



C.WAD.222.ABX
L 50 D 50 H 47 cm
L 19 2/3 D 19 2/3 H 18 1/2 in

Pouf with structure in multilayer fir wood and expansive polyurethane foam. Upholstery in leather cat. B Touch col. Black with "Spiga" quilting. Base in MDF with matt Black Lacquered finishing.

WILD (page 221-223, 237)



C.WIL.222.AA1
Ø 80 H 42 cm
Ø 31 1/4 H 16 1/2 in

Pouf with structure in solid poplar wood, multilayer pine wood and expansive polyurethane foam. Side upholstery in leather cat. A Sauvage col. Tenebra, with capitonné and metallic element in zama alloy with polished galvanic gold finishing. Seat upholstery in fabric cat. A Velvet RC Wild Jaguar col. Natural. Base in MDF with matt Black Lacquered finishing.

LOW TABLES

COOPER (page 42, 44, 48-49, 62, 64-65)



C.COO.232.A1X
Ø 75 H 50 cm
Ø 29 1/2 H 19 1/2 in

Side table with structure in metal with Brushed Dark Bronze finishing. Top in Grey Agate.

COOPER (page 83, 85, 87, 119-120, 122, 220, 224)



C.COO.232.A8X
Ø 75 H 50 cm
Ø 29 1/2 H 19 1/2 in

Side table with structure in metal with Gold finishing. Top in multilayer wood veneered in glossy Grey Carbalho.

INAGUA (page 63, 63b, 64, 66-68)



C.INA.231.A6X
L 130 D 113 H 35 cm
L 51 1/4 D 44 1/2 H 13 2/3 in



C.INA.232.A6X
L 80 D 70 H 50 cm
L 31 1/2 D 27 1/2 H 19 3/4 in

Low tables with structure in MDF with matt Ivory Lacquered finishing, covered in Grey Porcelain Gres. Metal feet with Gold finishing.

JIPE (page 101, 105-106, 111)



C.JIP.231.ATX
Ø 140 H 35 cm
Ø 55 H 13 2/3 in

Central table with structure in epoxy resin with Antique Bronze finishing. Top in marble cat. A Travertino Navona.

JIPE (page 101-106)



C.JIP.232.ATX
Ø 70 H 51 cm
Ø 27 1/2 H 20 in



C.JIP.232.BTX
Ø 55 H 51 cm
Ø 21 3/4 H 20 in

Side tables with structure in epoxy resin with Antique Bronze finishing. Top in marble cat. A Black & Gold.

MAUI (page 7, 9, 101b, 107-109, 118)



C.MAU.232.ALX
Ø 82 H 50 cm
Ø 32 1/4 H 19 3/4 in

Side table with structure in hammered brass tubing with Gold finishing. Decorative brass leaves with Gold finishing. Top in bronzed glass.

MERU (page 11-13)



C.MER.231.A9X
L 128 D 76 H 30 cm
L 50 1/2 D 29 3/4 H 12 in

Central table with structure in polyurethane resin with Antique Bronze finishing. Top in extra clear glass with back-printed design on ivory background.

PAJE (page 17-21, 25)



C.PAJ.232.A6X
L 82 D 72 H 36 cm
L 32 1/4 D 28 H 14 in



C.PAJ.232.B6X
L 67 D 58 H 46 cm
L 26 D 22 3/4 H 18 in

Side tables with structure in cylindrical section iron rod and sheet iron in Gold finishing. Top in Ivory Porcelain Gres on the upper part and Ivory matt lacquered finishing on lower part. Brass plate with RC monogram on the top.

RAGALI (page 29, 32-34)



C.RAG.231.ATX
L 160 D 113 H 15 cm
L 63 D 44 1/2 H 5 3/4 in

Central table with structure and lower part of the top in MDF with Antique Bronze finishing. Top in marble cat. A Bianco Carrara.

RAGALI (page 75, 126, 128-129, 132-133)



C.RAG.231.ATX
L 160 D 113 H 15 cm
L 63 D 44 1/2 H 5 3/4 in

Central table with structure and lower part of the top in MDF with Antique Bronze finishing. Top in marble cat. A Black & Gold.

RAGALI (page 29, 32, 36)



C.RAG.232.ATX
Ø 57 H 50 cm
Ø 22 1/2 H 19 3/4 in

Side table with structure in iron rods with Gold finishing. Top in marble cat. A Bianco Carrara.

RAGALI (page 78, 126-127, 129)



C.RAG.232.ATX
Ø 57 H 50 cm
Ø 22 1/2 H 19 3/4 in

Side table with structure in iron rods with Gold finishing. Top in marble cat. A Black & Gold.

RAGALI.2 (page 29, 32-34, 82, 84, 86)



C.RA2.231.BTX
L 158 D 89 H 22 cm
L 63 D 44 1/2 H 5 3/4 in

Central table with structure and lower part of the top in MDF with Antique Bronze finishing. Top in marble cat. A Bianco Carrara with "scagliola" pattern.

RAGALI.2 (page 28, 35, 3,7)



C.RA2.232.ATX
Ø 57 H 50 cm
Ø 22 1/2 H 19 3/4 in

Side table with structure in iron rods with Gold finishing. Top in marble cat. A Bianco Carrara with "scagliola" pattern.

SAHARA (page 197, 259)



C.SAH.232.CMX
Ø 55 H 53 cm
Ø 21 3/4 H 20 3/4 in

Side table with structure in laser-cut and calendered sheet iron with Gold finishing. Lower part of the top in MDF with matt Black Lacquered finishing and upper part of the top made of hand bevelled bronzed mirrors.

SAHARA (page 16-17, 23)



C.SAH.232.CO1
Ø 55 H 53 cm
Ø 21 3/4 H 20 3/4 in



C.SAH.232.BO1
Ø 100 H 40 cm
Ø 39 1/4 H 15 3/4 in

Side tables with structure in laser-cut and calendered sheet iron with Gold finishing. Lower part of the top in MDF with matt Black Lacquered finishing. Top in Sahara Noir polished marble with partial engraved RC monogram.

SIORAF (page 56-58, 118-119, 121-122)



C.SIO.232.ASX
Ø 50 H 60 cm
Ø 19 2/3 H 23 1/2 in



C.SIO.231.ASX
Ø 105 H 35 cm
Ø 41 1/3 H 13 2/3 in

Low tables in cast brass with Gold finishing. Top in MDF veneered in Wengé Dyed Oak.

TURKANA (page 43-44, 46)



C.TUK.232.A2X
L 87 D 93 H 25 cm
L 34 1/4 D 36 1/2 H 9 3/4 in

Central table with structure and lower part of the top in MDF with Antique Bronze finishing. Top in Emerald Onyx.

TURKANA (page 6, 43-44, 46)



C.TUK.231.B2X
L 130 D 88 H 19 cm
L 51 D 34 1/2 H 7 1/2 in

Central table with structure and lower part of the top in MDF with Antique Bronze finishing. Top in White Onyx.

TURKANA (page 43-46)



C.TUK.231.AOX
L 139 D 81 H 13 cm
L 54 1/2 D 31 3/4 H 5 in

Central table with structure and lower part of the top in MDF with Antique Bronze finishing. Top in marble cat. B Silk Georgette Blue.

TURKANA (page 6, 43-44, 46, 75)



C.TUK.231.C2X
L 158 D 103 H 7 cm
L 62 D 40 1/2 H 2 3/4 in

Central table with structure and lower part of the top in MDF with Antique Bronze finishing. Top in Grey Onyx.

VANUATU (page 28, 31, 33, 57, 59, 63b, 67, 69)



C.VAN.232.AMX
L 54 D 54 H 50 cm
L 21 1/2 D 21 1/4 H 19 3/4 in

Side table with structure in hammered brass tubing with Gold finishing. Top in cast brass with crocodile pattern.

WATAMU (page 91-93, 97)



C.WAT.231.A8X
L 140 D 74 H 25 cm
L 55 D 29 1/4 H 9 3/4 in

C.WAT.231.BQA
L 80 D 80 H 36 cm
L 31 1/2 D 31 1/2 H 14 1/4 in

Set of two central tables.
Higher element with structure in calendered iron with laser-cut animal design, with Brushed Dark Bronze finishing.
Lower element in curved multilayer wood veneered in glossy Grey Carbalho.

WATAMU (page 90, 91b, 92, 94-95)



C.WAT.232.A8X
L 60 D 52 H 48 cm
L 23 1/2 D 20 1/2 H 18 3/4 in

C.WAT.232.BQA
L 66 D 36 H 56 cm
L 26 D 14 1/4 H 21 3/4 in

Set of two side tables.
Higher element with structure in calendered iron with laser-cut animal design, with Brushed Dark Bronze finishing.
Lower element in curved multilayer wood veneered in glossy Grey Carbalho.

YOA (page 75-77)



C.YOA.232.ALX
Ø 65 H 52 cm
Ø 25 2/3 H 20 1/2 in

Side table with structure in patinated cast brass. Top in bronzed glass with silkscreened RC monogram.

CONSOLES

MORNE (page 196, 201)



C.MOE.522.A82
L 170 D 40 H 85 cm
L 67 D 15 3/4 H 33 1/2 in

Console with structure in MDF veneered in glossy Grey Carbalho externally and with matt Black Lacquered finishing internally. Drawers with inner cover in anthracite microfibre. Drawers front in MDF with Antique Bronze finishing.

SIORAF (page 62, 70-71, 74)



C.SIO.521.AOX
L 170 D 44 H 89 cm
L 67 D 17 1/3 H 35 in

Console with structure in cast brass with Gold finishing. Top in marble cat. B Bamboo with undertop in MDF with matt Black lacquered finishing.

SOHO (page 131)



C.SOH.521.AMX
L 170 D 44 H 85 cm
L 67 D 17 1/3 H 33 1/2 in

Console with structure in metal with Black Chrome finishing. Top in smoked glass.

TRINIDAD (page 38-39)



C.TRI.521.C2X
L 180 D 45 H 60 cm
L 71 D 17 2/3 H 23 1/2 in

Console with structure in metal with Gold finishing. Top in White Onyx.

WATAMU (page 6, 248, 252-253)



C.WAT.521.A8X

L 133 D 45 H 73 cm
L 52 1/4 D 17 3/4 H 28 3/4 in

C.WAT.521.BQA

L 139 D 36 H 85 cm
L 54 3/4 D 14 1/4 H 33 1/2 in

Set of two consoles. Higher element in calendered iron with laser-cut animal design, with Brushed Dark Bronze finishing. Lower element in curved multilayer wood veneered in glossy Grey Carbalho.

DINING TABLES

ANTIGUA (page 153-155, 157)



C.ANT.122.C8A

L 300 D 110 H 77 cm
L 118 D 43 1/3 H 30 1/3 in

Dining table with structure in iron rods with Gold finishing. Lower part of the top in MDF with matt lacquered finishing. Top in MDF veneered in glossy Grey Carbalho.

BAOBAB (page 135-139)



C.BAO.123.AOB

Ø 180 H 75 cm
Ø 70 3/4 H 29 1/2 in

Dining table with structure in cylindrical section calendered iron rod with Gold finishing. Top consisting of five irregularly shaped elements in marble cat. B Versylis with undertop in MDF with matt Ivory lacquered finishing.

COMORE (page 143-148)



C.CMR.122.C6X + C.COM.936.CQX

L 240 D 110 H 75 cm
L 94 1/2 D 43 1/3 H 29 1/2 in

Dining table with bases and top in multi-layer wood. Finishing in Ivory Porcelain Gres undertop in MDF with matt Ivory lacquered finishing. Gold metal details.

KIBO (page 175, 177-179)



C.KIB.123.A8X

Ø 180 H 76 cm
Ø 70 3/4 H 30 in

Dining table with structure in laser-cut calendered sheet iron with Brushed Bronze finishing. Top in MDF veneered in glossy Grey Carbalho, with inserts in folded laser-cut sheet iron with Brushed Bronze finishing. Lazy Susan in Grey Porcelain Gres, framed by a circular structure in sheet iron with Brushed Bronze finishing.

NYOS (page 183-185)



C.NYO.123.ATX

Ø 180 H 75 cm
Ø 70 3/4 H 29 1/2 in

Dining table with base in curved calendered iron rods with Brushed Bronze finishing. Top in marble cat. A Black & Gold with lazy susan in Brushed Dark Bronze finishing. Lower part of the top in MDF with matt Black Lacquered finishing.

SIORAF (page 161, 163, 165)



C.SIO.123.AMX

Ø 180 H 77 cm
Ø 70 3/4 H 30 1/3 in

Dining table with central base in cast brass with Gold finishing. Bronzed glass top.

SIORAF (page 168-169, 171-172)



C.SIO.122.B8X

L 250 D 110 H 75 cm
L 98 1/2 D 43 1/3 H 29 1/2 in

Metal bases in cast brass with Gold finishing. Frame in calendered sheet iron with Gold finishing. Top in honeycomb (solid fir wood, honeycomb, MDF, iron reinforcements) in Eucalyptus Frisé veneered. Lower part of the top covered in microfibre.

CHAIRS

INANDA (page 144-149, 151)



C.IND.132.ABX

L 60 D 62 H 80 cm
L 23 1/2 D 24 1/4 H 31 1/2 in

Chair with structure in multilayer poplar wood. External upholstery in leather cat. B Touch col. Ivory. Internal upholstery in fabric cat. A Jacquard Deni col. D1. Seat band and cone-shaped legs in solid beech wood and solid oak wood with Ivory Embossed Ivory Lacquered finishing. Tips and piercing with Gold finishing.

KEY WEST (page 161-165)



C.KEY.132.AHX + C.COM.932.BMX

L 60 D 61 H 78 cm
L 23 1/2 D 23 3/4 H 30 3/4 in

Chair with structure in curved multilayer wood and expansive polyurethane foam. Upholstery in fabric cat. B Silk Satin RC Halle col. Beige. Back with steel slab in Gold finishing. Legs in solid beech wood with Embossed Black Lacquered finishing.

KEY WEST (page 196, 249-251)



C.KEY.132.AHX + C.COM.932.BMX

L 60 D 61 H 78 cm
L 23 1/2 D 23 3/4 H 30 3/4 in

Chair with structure in curved multilayer wood and expansive polyurethane foam. Upholstery in fabric cat. B Silk Satin RC Wild Jaguar col. Natural. Back with steel slab in Gold finishing. Legs in solid beech wood with Embossed Black Lacquered finishing.

KEY WEST (page 163-165)



C.KEY.132.AAX + C.COM.932.BMX

L 60 D 61 H 78 cm
L 23 1/2 D 23 3/4 H 30 3/4 in

Chair with structure in curved multilayer wood and expansive polyurethane foam. Upholstery in leather cat. A Vintage col. 1. Back with steel slab in Gold finishing. Legs in solid beech wood with Embossed Black Lacquered finishing.

KEY WEST (page 189-193)



C.KEY.133.AGX + C.COM.932.DMX

L 60 D 54 H 100 cm
L 23 1/2 D 21 1/4 H 39 1/2 in

Bar stool in curved multilayer wood and expansive polyurethane foam. Upholstery in fabric cat. A Velvet RC Zebrina col. Natural. Back with steel slab in Gold finishing. Legs in solid beech wood with Embossed Black Lacquered finishing. Swivel mechanism.

KIVU (page 153, 155, 157)



C.KIV.132.AAX

L 60 D 58 H 85 cm
L 23 1/2 D 23 H 33 1/2 in

Chair in multilayer beech wood and expansive polyurethane foam. Upholstery in leather cat. A Glitter col. Pomice. Armrests in hammered brass with Gold finishing. Metal tips with Gold finishing.

KIVU (page 153-157)



C.KIV.132.AGX

L 60 D 58 H 85 cm
L 23 1/2 D 23 H 33 1/2 in

Chair in multilayer beech wood and expansive polyurethane foam. Upholstery in fabric cat. A Jacquard Deni col. C1. Armrests in hammered brass with Gold finishing. Metal tips with Gold finishing.

MACLAINE (page 184-185, 187)



C.MAC.132.ABX

L 58 D 63 H 82 cm
L 23 D 24 3/4 H 32 1/3 in

Chair with armrests with structure in curved multilayer poplar wood and expansive polyurethane foam. Upholstery in leather cat. B Touch col. Black. Legs in laser-cut metal with Brushed Bronze finishing.

MACLAINE (page 183-185, 187)



C.MAC.132.AHX

L 58 D 63 H 82 cm
L 23 D 24 3/4 H 32 1/3 in

Chair with armrests with structure in curved multilayer poplar wood and expansive polyurethane foam. Upholstery in fabric cat. B Silk Satin RC Wild Jaguar col. Natural, with piping in leather cat. B Touch col. Black. Legs in laser-cut metal with Brushed Bronze finishing.

SHIRA (page 136-138, 141)



C.SHR.132.ABB

L 56 D 61 H 84 cm
L 22 D 23 3/4 H 33 in

Chair with structure and tapered legs in calendered iron rods with Gold finishing. Seat in multilayer poplar wood and expansive polyurethane foam with upholstery in leather cat. B Touch col. Sand. Backrest in multilayer poplar wood and expansive polyurethane foam with internal upholstery in leather cat. B Touch col. Sand and external upholstery in fabric cat. A Jacquard Monogram col. Champagne.

SHIRA (page 176-179)



C.SHR.132.ABB

L 56 D 61 H 84 cm
L 22 D 23 3/4 H 33 in

Chair with structure and tapered legs in calendered iron rods with Gold finishing. Seat in multilayer poplar wood and expansive polyurethane foam with upholstery in leather cat. B Touch col. Black. Backrest in multilayer poplar wood and expansive polyurethane foam with internal upholstery in leather cat. B Touch col. Black and external upholstery in fabric cat. B Silk Satin RC Wild Jaguar col. Natural.

TEIDE (page 168-172)



C.TEI.131.ABX

L 53 D 58 H 84 cm
L 20 3/4 D 22 3/4 H 33 in

Chair with structure in iron rod with Gold finishing. Seat and backrest in multilayer poplar wood and expansive polyurethane foam. Seat and backrest upholstery in fabric cat. A Velvet RC Wild Zebra col. Beige. Back upholstery in leather cat. B Touch col. Sand.

DAY STORAGE UNITS

AZINGO (page 162, 166-167)



C.AZI.116.AKX + C.COM.935.AMX

L 119 D 50 H 150 cm
L 46 3/4 D 19 1/2 H 38 3/4 in

Cabinet with structure in MDF with glossy Black Lacquered finishing. Monstera leaves handles in cast brass with Gold finishing. Interior covered in mirror and microfibre with shelves in smoked glass.

KARIBA (page 189-193)



C.KAB.241.ABX + C.COM.925.XMX

L 220 D 98 H 110 cm
L 86 1/4 D 37 H 43 1/3 in

Bar counter in multilayer wood covered in leather cat. B Touch col. Sand with "Uma" quilting. Top in marble. Base, doors, and interior in sheet iron with Brushed Bronze finishing. Internal structure with Embossed Desert lacquered finishing.

KASAI (page 136, 140)



C.KAS.141.AGX
L 140 D 55 H 210 cm
L 55 D 21 2/3 H 82 3/4 in

Showcase with structure in multilayer poplar wood covered in jacquard fabric cat. A Deni col. B1. Interior in microfibre with backrest in smoked mirror. Strip LED interior lighting. Doors and shelves in glass. JC1 handles with polished gold finishing.

KASAI (page 184)



C.KAS.141.A8X
L 140 D 55 H 210 cm
L 55 D 21 2/3 H 82 3/4 in

Showcase with structure in multilayer poplar wood veneered in glossy Grey Carbalho. Interior in microfibre with backrest covered in fabric cat. B Silk Satin RC Wild Jaguar col. Natural. Strip LED interior lighting. Doors and shelves in glass. JC1 handles with polished gold finishing.

SOIRA (page 176, 180-181)



C.SOI.113.A8X
L 240 D 56 H 97 cm
L 94 1/2 D 22 H 38 1/4 in

Sideboard with structure in MDF veneered in glossy Grey Carbalho. Cube element covered in Porcelain Gres col. Grey. Interior covered in microfibre with shelves in bronzed glass. Base in MDF with Embossed Black Lacquered finishing. Lower base in iron with Brushed Bronze finishing.

TONGA (page 145, 149)



C.TON.115.A6X + C.COM.937.AMX
L 120 D 50 H 150 cm
L 47 1/4 D 19 2/3 H 59 in

Bar cabinet with structure in MDF covered in Porcelain Gres col. Ivory and in sheet steel with Gold finishing. Interior covered in microfibre and natural mirror with glass shelves.

TONGA (page 144, 146, 150-151)



C.TON.113.A6X + C.COM.938.CMX
L 240 D 50 H 85 cm
L 94 1/2 D 19 2/3 H 33 1/2 in

Sideboard with structure in MDF covered in Porcelain Gres col. Ivory and in sheet steel with Gold finishing. Interior covered in microfibre with glass shelves.

VAAL (page 56, 154, 156, 158-159)



C.VAA.113.A8X + C.COM.939.AMX
L 250 D 53 H 83 cm
L 98 D 21 H 32 3/4 in

Sideboard with structure in MDF in glossy Grey Carbalho veneered. Inserts in sheet iron with Gold finishing. Interior covered in anthracite microfibre with shelves in bronzed glass. Base in metal with Gold finishing.

VAAL (page 169-171, 173)



C.VAA.113.A8X + C.COM.939.AMX
L 250 D 53 H 83 cm
L 98 D 21 H 32 3/4 in

Sideboard with structure in MDF in glossy Eucalyptus Frisé veneered. Inserts in sheet iron with Gold finishing. Interior covered in microfibre with shelves in bronzed glass. Base in metal with Gold finishing.

BOOKCASES

ACAPULCO (page 29b, 30-31)



Modular bookcase with TV holder. Structure in MDF with Embossed Desert Lacquered finishing on the inside and covered in laminated metal with Brushed Gold finishing on the outside. Doors with front in MDF, covered in leather cat. B Touch col. Sand with "Stella" quilting. JC1 handles with polished Gold finishing. Back panels covered in fabric cat. B Silk Satin RC Zhanj col. 3.

SPECIAL COMPOSITION
L 530 D 55 H 344 cm
L 208 2/3 D 21 2/3 H 135 1/2 in

ACAPULCO (page 101b, 107)



Modular bookcase with structure in MDF with Embossed Black Lacquered finishing on the inside and covered in laminated metal with Brushed Gold finishing on the outside. Doors with front in MDF, covered in leather cat. B Touch col. Black with "Stella" quilting. JC29 handle with polished Gold finishing. Back panels covered in natural mirror.

C.ACA.542.AKX
L 230 D 55 H 344 cm
L 90 3/4 D 21 2/3 H 135 1/2 in

WALL.2 (page 6-7, 249)



C.WL2.542.A8X (2x) + C.WL2.542.B8X (6x)
C.WL2.542.C8X (4x) + C.WL2.542.D8X (4x)
L 300 D 35 H 309 cm
L 118 D 13 2/3 H 121 2/3 in

Modular bookcase with structure in MDF. Horizontal modules veneered in glossy Grey Carbalho. Vertical supports covered in leather cat. B Cocco Vintage col. 28.

BEDS

ELGON (page 194-200)



C.ELG.312.AAX
L 265 D 232 H 126 cm
L 104 1/4 D 91 H 49 1/2 in

Bed with headboard and bed frame in multilayer poplar wood, solid polar wood and solid fir wood. Padding in expansive polyurethane foam. Upholstery in leather cat. A Vintage col. 1, with inserts in the special finishing gold laminated leather.

MALAWI (page 219-223)



C.MAW.312.ABX
L 236 D 249 H 111 cm
L 93 D 98 H 43 3/4 in

Bed with structure in solid poplar wood and expansive polyurethane foam. Upholstery in leather cat. B Touch col. Black. Metal decorative elements with Gold finishing.

MORNE (page 229-231, 233)



C.MOE.312.AH8 + C.MOE.81A.AHX
+ C.COM.841.CMX
L 263 D 230 H 108 cm
L 103 1/2 D 90 1/2 H 42 1/2 in

Bed with headboard in honeycomb veneered in glossy Grey Carbalho. Headboard cushions with core in aluminium and high density expansive polyurethane foam. Upholstery in fabric cat. B Silk Satin RC Wild Tiger col. Natural. Bed frame in multilayer fir wood and Masonite, with padding in foam rubber. Upholstery in leather cat. B Touch col. Black. RC Snake embroidery on the front part of the bed frame.

NILO (page 211-215)



C.NIL.312.ABX + C.COM.962.AMX
L 286 D 249 H 128 cm
L 112 1/2 D 98 H 50 1/3 in

Bed with headboard and bed frame in multilayer poplar wood, solid polar wood and solid fir wood. Padding in expansive polyurethane foam. Upholstery in leather cat. B Touch col. Sand. Decorative insert on the headboard with "Spiga" quilting. Metal decorative elements with Gold finishing.

SMOKING (page 203-207, 209)



C.SMO.312.AGX + C.COM.888.AMX
L 200 D 240 H 100 cm
L 78 1/4 D 94 1/2 H 39 1/2 in

Bed with structure in solid poplar wood and expansive polyurethane foam. Upholstery in fabric cat. B Velvet Paul Jaguar Printed col. 437 Tortora. Metal counterweight with Chrome finishing and upholstery in fabric cat. B Velvet Paul Jaguar Printed col. 437 Tortora.

NIGHT STORAGE UNITS

DORIAN.2 (page 220-223)



C.DO2.321.AKX + C.COM.966.ATX
L 52 D 48 H 52 cm
L 20 1/2 D 19 H 20 1/2 in

Night table with structure in MDF with glossy Black Lacquered finishing. Top in marble cat. A Black & Gold. JC1 handle with polished gold finishing.

MARTINICA (page 204-206, 208)



C.MAT.321.AKX
L 60 D 50 H 53 cm
L 23 1/2 D 19 2/3 H 21 in



C.MAT.321.BKX
L 60 D 50 H 53 cm
L 23 1/2 D 19 2/3 H 21 in

Night table with structure in iron with Brushed Dark Bronze finishing. Storage element in MDF with glossy Ivory Lacquered finishing. One or two drawers with front covered in metal with Brushed Dark Bronze finishing.

MORNE (page 230-231, 233, 235)



C.MOE.321.A82
L 70 D 48 H 50 cm
L 27 1/2 D 18 3/4 H 19 3/4 in



C.MOE.321.A81
L 70 D 48 H 50 cm
L 27 1/2 D 18 3/4 H 19 3/4 in

Night table with structure in MDF veneered in glossy Grey Carbalho externally and with matt Black Lacquered finishing internally. Drawer with inner cover in anthracite microfibre. Drawer front in MDF with Antique Bronze finishing or Patinated Bronze Python 3D Printed finishing. Shelf in bronzed glass.

MORNE (page 234)



C.MOE.331.B81
L 100 D 50 H 150 cm
L 39 1/4 D 19 3/4 H 59 in

Drawer unit with structure in MDF veneered in glossy Grey Carbalho externally and with matt Black Lacquered finishing internally. Drawers with inner cover in anthracite microfibre. Drawers front in MDF with Patinated Bronze Python 3D Printed finishing.

MORNE (page 236-237)



C.MOE.331.A81
L 160 D 50 H 85 cm
L 63 D 19 3/4 H 33 1/2 in

Drawer unit with structure in MDF veneered in glossy Grey Carbalho externally and with matt Black Lacquered finishing internally. Drawers with inner cover in anthracite microfibre. Drawers front in MDF with Patinated Bronze Python 3D Printed finishing.

NAKURU (page 239-245)



Custom made modular walk-in closet with structure in multilayer wood. Back panel covered in fabric cat. B Velvet Paul col. Sand, Zebra printed. Shelves and drawer units in black lacquered finishing. Drawers front covered in fabric cat. B Silk Satin RC Karen col. 2. Jewel handles in lost-wax cast brass with polished champagne finishing. Hanging bars in metal. LED lighting system.

WALK-IN CLOSET
L 340 D 300 H 300 cm
L 134 D 118 H 118 in

SAHARA.6 (page 213b, 217)



C.SA6.331.ABX + C.COM.968.A2X
L 146 D 50 H 84 cm
L 57 1/2 D 19 3/4 H 32 3/4 in

Drawer unit with structure and base in MDF covered in leather cat. B Touch col. Ash Grey. Drawers front in MDF with glossy Desert Lacquered finishing. Top in Grey Onyx. Feet in MDF with iron carter in Gold finishing.

TRINIDAD (page 196, 198, 200, 212-215)



C.TRI.321.CBX + C.COM.963.C2X
C.TRI.321.DBX + C.COM.963.D2X
L 64 D 44 H 52 cm
L 25 1/4 D 17 1/3 H 20 1/2 in

Night table with structure in curved multilayer poplar wood covered in leather cat. B Touch col. Ash Grey. Drawer with JC424 handle in polished gold finishing. Top in Grey Onyx. Feet in iron rod with Gold finishing.

BEAUTY

UMA (page 28, 32, 36)



C.UMA.551.AMX
L 78 D 3 H 260 cm
L 30 3/4 D 1 1/4 H 102 1/3 in

C.UMA.551.BMX
L 88 D 3 H 225 cm
L 34 2/3 D 1 1/4 H 88 1/2 in

Screen in laser-cut iron with Brushed Dark Bronze finishing.

HOME OFFICE

ANTIGUA (page 247-251)



C.ANT.411.F8B
L 200 D 89 H 77 cm
L 78 3/4 D 35 H 30 1/3 in

Desk with structure composed of top and two bases. One base made of iron rods of different sizes in round and square sections, with Gold finishing. One base with three drawers in curved multilayer wood, veneered in glossy Grey Carbalho. Drawers with inner cover in anthracite microfibre. JC424 jewel handles in lost-wax cast brass with polished Gold finishing. Top in multilayer wood veneered in glossy Grey Carbalho. Lower part of the top covered in leather cat. A Sauvage col. Tenebra.

LIGHTS

ANTIGUA (page 63b, 66, 154-155, 157)



C.ANT.611.AMX
Ø 26 H 125 cm
Ø 10 1/4 H 49 1/4 in

Chandelier with metal elements in Gold and Black Chrome finishing.

ANTIGUA (page 28, 31, 33, 37, 103, 106, 205-206, 230)



C.ANT.631.AMX
Ø 36 H 55 cm
Ø 10 1/4 H 49 1/4 in

Table lamp with metal elements in Gold and Black Chrome finishing.

BATTEN (page 144-147)

Chandelier with structure and chains in metal with Gold finishing. Decorative elements in brass with Gold finishing and in blown glass with animal design.

C.BAT.611.AMX
 Ø 80 H 120 cm
 Ø 31 1/2 H 47 1/4 in

BRICK (page 57, 59)

Table lamp with structure in iron and brass with Brushed Dark Bronze finishing. Shade in shantung silk col. Silver.

C.BRI.631.AMX
 Ø 50 H 78 cm
 Ø 19 3/4 H 30 1/4 in

BRICK (page 6)

Floor lamp with structure in iron and brass with Brushed Dark Bronze finishing. Shade in shantung silk col. Silver.

C.BRI.621.AMX
 Ø 55 H 156 cm
 Ø 21 1/3 H 61 1/2 in

CORAL (page 16, 25, 63, 71, 252, 260)

Floor lamp with structure in iron and brass with Brushed Dark Bronze or Gold finishing. Shade in shantung silk col. Silver or Ivory.

C.CRL.621.AMX
 Ø 55 H 156 cm
 Ø 21 1/3 H 61 1/2 in

KIOGA (page 118, 122, 177-179, 231)

Chandelier made with a laser-cut brass pole. Illumination with E14 LED bulb.

C.KIO.611.AMX
 Ø 7 H 60 cm
 Ø 2 3/4 H 23 1/2 in

C.KIO.611.BMX
 Ø 7 H 40 cm
 Ø 2 3/4 H 15 3/4 in

LIPARI (page 163, 167, 185)

Chandelier with structure in metal with Gold finishing. Decorative elements in printed Murano glass.

C.LIP.611.AMX
 Ø 55 H 160 cm
 Ø 21 2/3 H 63 in

LOGIPI (page 212, 214, 221-223, 237, 248)

Table lamp with structure in laser-cut brass. Opaline plexiglass and 24 W LED strip.

C.LGI.631.AMX
 Ø 25 H 60 cm
 Ø 10 H 23 1/2 in

LOGIPI (page 42, 48, 53, 82, 84, 213b)

Floor lamp with structure in aluminum with Gold finishing. Shade in silk col. Ivory. Interior with opaline plexiglass and 24 W strip LED.

C.LGI.621.AMX
 Ø 50 H 200 cm
 Ø 19 3/4 H 78 3/4 in

MAUI (page 168, 172)

Wall lamp with structure in hammered brass tubing with Gold finishing. Decorative brass leaves with Gold finishing.

C.MAU.641.AMX
 L 50 H 60 cm
 L 19 3/4 H 23 1/2 in

MAYA (page 17, 21)

Wall lamp with structure in hammered brass rod with Gold finishing. Decorative brass leaves with Gold finishing.

C.MAY.641.AMX
 L 42 H 62 cm
 L 16 1/2 H 24 1/4 in

SIORAF (page 29)



C.SIO.611.AMX
Ø 100 H 100 cm
Ø 39 1/4 H 39 1/4 in

Chandelier with structure in cast brass with Dark Bronze finishing. Steel suspension cable and metal chain with Dark Bronze finishing. Internal lampshade col. Ivory.

SIORAF (page 127-128, 190-191, 193, 196, 198)



C.SIO.611.BMX
Ø 20 H 47 cm
Ø 8 H 18 1/2 in

Chandelier with structure in cast brass with Gold finishing. Steel suspension cable and metal chain with Gold finishing. Internal lampshade col. Ivory.

SIORAF.3 (page 154, 156, 159)



C.SI3.631.AMX
Ø 50 H 85 cm
Ø 19 3/4 H 33 1/2 in

Table lamp with structure in cast brass with Brushed Dark Bronze finishing. Shade in fabric col. Ivory.

SIORAF.3 (page 74, 78, 90, 92, 95)



C.SI3.621.AMX
Ø 70 H 220 cm
Ø 27 1/3 H 86 2/3 in

Floor lamp with structure in cast brass with Brushed Dark Bronze finishing. Shade in fabric col. Ivory.

WILD (page 220, 222, 224)



C.WIL.631.BM1
Ø 37 H 73 cm
Ø 14 1/2 H 28 3/4 in

Table lamp with cone-shaped lampshade in fabric cat. A Velvet RC Wild Jaguar col. Natural. Structure in polyurethane resin with Antique Bronze finishing, attached to a base in metal with Gold finishing.

MIRRORS

KELBIA (page 100, 102, 104-105, 129, 230)



C.KEL.512.ANX
L 120 D 5 H 240 cm
L 47 1/4 D 2 H 94 1/2 in

Standing mirror with structure in MDF, covered on the front with a metal sheet with Brushed Dark Bronze finishing and with decorative elements in leather cat. A Sauvage col. Tenebra with "Waddi" quilting, leather cat. B Cocco col. 5 and fabric cat. A Velvet RC Wild Jaguar col. Natural. Natural mirror.

SAHARA (page 204, 208-209)



C.SAH.512.AMX
L 160 D 8 H 240 cm
L 63 D 3 1/4 H 94 1/2 in

Standing mirror with structure in MDF. Metal frame with Brushed Dark Bronze finishing. Bevelled bronzed mirror.

SAHARA (page 169-170, 173)



C.SAH.511.EMX
Ø 100 D 6 cm
Ø 39 1/4 D 2 1/4 in

Mirror with structure in MDF. Metal frame with Gold finishing. Bevelled bronzed mirror.

TRINIDAD (page 6, 62, 71, 248, 252)



C.TRI.511.BMX
L 97 D 5 H 120 cm
L 38 D 2 H 47 1/4 in

Mirror with structure in MDF with matt Ivory Lacquered finishing. Iron wall supports with Brushed Dark Bronze finishing. Natural mirror.



C.WIT.511.AMX
Ø 120 D 12 cm
Ø 47 1/4 D 4 3/4 in

Convex mirror with frame in metal sheet with Antique Bronze finishing.

COMPLEMENTS



C.WIL.251.AG1
Ø 115 H 195 cm
Ø 45 1/4 H 76 3/4 in

Suspended seat in fabric cat. A Canvas RC Flag col. Natural and seat padded in high density expansive polyurethane foam, upholstered in fabric cat. A Canvas RC Wild Tiger col. Natural. Cords in polyamide fibres. Reinforcement band connecting the ropes to the body of the chair in leather col. Black with contrasting stitching in col. Beige. Metallic support element in iron covered in leather col. Black and decorative tip elements in zama alloy with polished galvanic gold finishing. Available also with supporting base in iron with Brushed Bronze finishing, for self-standing use.



C.WIL.371.AG1
L 95 D 66 H 35 cm
L 37 1/4 D 26 H 13 3/4 in

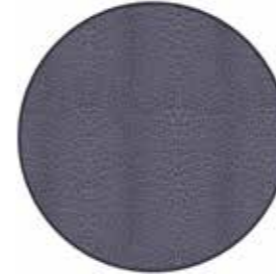
Dog bed with structure in multilayer poplar wood and polyurethane foam. Frame in iron rod with Gold finishing. External upholstery in ecoleather colour Black. Internal cushion with removable cover in fabric Canvas RC Wild Tiger col. Natural.



C.WIL.371.AG2
L 96 D 65 H 25 cm
L 37 3/4 D 25 1/2 H 9 3/4 in

Dog bed with structure in multilayer poplar wood and polyurethane foam. Upholstery in ecoleather colour Black. Internal cushion with removable cover in fabric Canvas RC Wild Tiger col. Natural. Metal details in Gold finishing.

CARPETS / RUGS



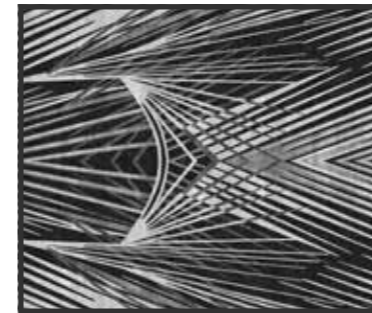
C.AUD.571.AMX
Ø 420 cm
Ø 265 1/3 in

Jaguar printed carpet with nylon edging.



C.AUD.571.AMX
L 300 D 300 cm
L 197 D 197 in

Jaguar printed carpet with nylon edging.



C.CHA.571.BMX
L 600 D 500 cm
L 236 1/4 D 197 in

Hand-tufted rug in wool and bamboo silk relief.



C.FLA.571.BAD-D4X3
L 400 D 300 cm
L 236 1/4 D 197 in

Hand-tufted rug in wool and silk. Natural-Black colour.

FLAG RUG (page 10-13, 16-25, 168-172)



Hand-tufted rug in wool and silk. Sand-Beige colour.

C.FLA.571.BBF-D4X3

L 400 D 300 cm
L 236 1/4 D 197 in

TIGER RUG (page 90-93, 96-97, 112-115, 118-119, 121-123, 220-221, 223, 230-231, 233-234, 237)

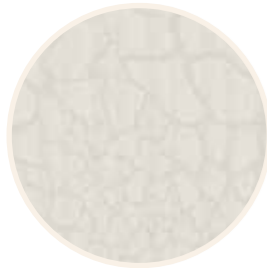


Hand-tufted rug in wool and silk. Natural-Black colour.

C.TIR.571.BAD-D4X3

L 400 D 300 cm
L 236 1/4 D 197 in

UMA (page 136-138, 141)

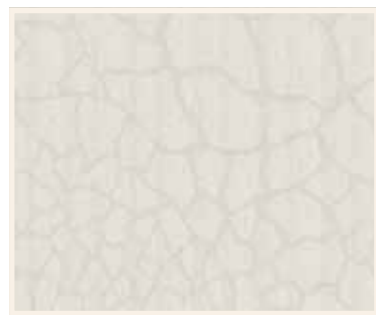


Hand-tufted rug in wool and bamboo silk relief. White-Beige colour.

C.UMA.571.BMX

Ø 420 cm
Ø 265 1/3 in

UMA (page 38-39, 56-59, 62-69, 74-79, 144-149, 153-157, 196-199)



Hand-tufted rug in wool and bamboo silk relief. White-Beige colour.

C.UMA.571.BMX

L 600 D 500 cm
L 236 1/4 D 197 in

DECORATIVE ITEMS

UNITED STATES OF CAVALLI (page 11)



Decorative artwork in printed velvet with "United States of Cavalli" design col. Beige. Frame in brass with Gold finishing.

C.USC.592.BMX

L 199 D 2 H 129 cm
L 78 1/3 D 2/3 H 50 3/4 in

UNITED STATES OF CAVALLI (page 16, 90-91, 95, 259)



Decorative artwork in printed silk with "United States of Cavalli" design col. Natural. Frame in brass with Gold finishing.

C.USC.592.AMX

L 199 D 2 H 129 cm
L 78 1/3 D 2/3 H 50 3/4 in

ARTWORKS (page 82, 84, 144, 146, 212, 214-215, 237)



C.ART.592.D

L 100 H 100 cm
L 39 1/2 H 39 1/2 in



C.ART.592.F

L 100 H 100 cm
L 39 1/2 H 39 1/2 in



C.ART.592.G

L 100 H 100 cm
L 39 1/2 H 39 1/2 in

Decorative artwork in printed fabric. Frame with Black Lacquered and Antique Bronze finishing.

ARTWORKS (page 74, 131, 154, 158, 162)



C.SIL.592.AMX

L 163 H 200 cm
L 39 1/2 H 78 2/3 in



C.SIL.592.BMX

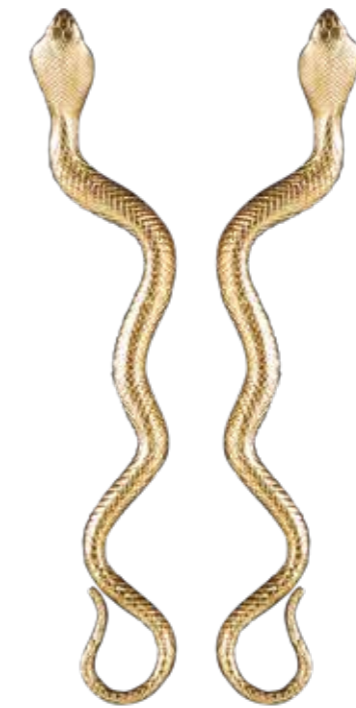
L 163 H 163 cm
L 39 1/2 H 39 1/2 in

Oil painting, decoration in golden leaf. Black and Bronze wooden frame.

JEWEL
HANDLES



"JEWEL HANDLES" IN MELTED BRASS AVAILABLE IN POLISHED GOLD OR POLISHED PLATINUM AND WITH SWAROVSKI CRYSTALS.



Stylist **Maria Trezzi, Alberto Stecca**
Photographs **Azimak Photo**

Pre-press **Monogramma, Cantù**
Printed in Italy by **Grafica Gioia, Cantù**
10.2022 © Copyright by **ONIRO Group s.r.l.**

This catalogue is property of ONIRO Group and cannot be sold. You may not reproduce any part of this catalogue without written authorization of the publisher. There are no licenses, either implied or expressed, to reproduce any part of this catalogue unless the license is in writing and signed by ONIRO Group. Copyright Laws protect the content of this catalogue, including the photographs and furniture design.

Pictures have an indicative value. The dimensions are approximate (with a tolerance of +/- 2%) and subject to change. The company preserves the right to change the technical features of the products shown in this catalogue without notice as a result of technical updates.

roberto cavalli

HOME

INTERIORS

robertocavallihomeinteriors.onirogroup.it

ONIRO GROUP

Via Montesolaro 14/B | 22063 Cantù (Co) Italy
T. +39 031 70757 | F. +39 031 711540
info@onirogroup.it | www.onirogroup.it