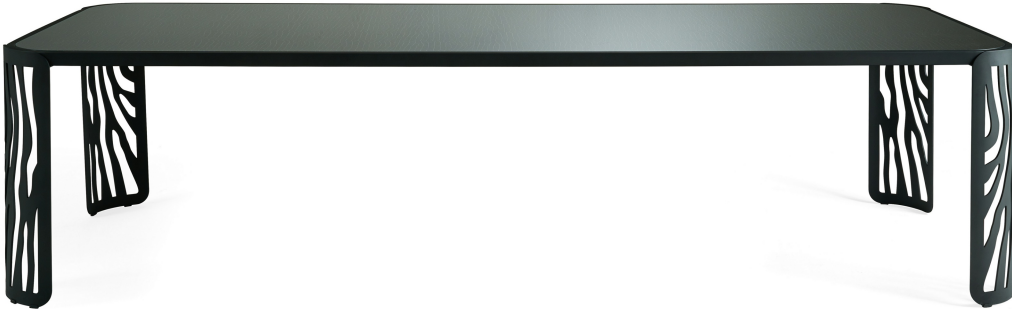


KALAHARI
TABLES

roberto cavalli
HOME
INTERIORS



DESCRIPTION

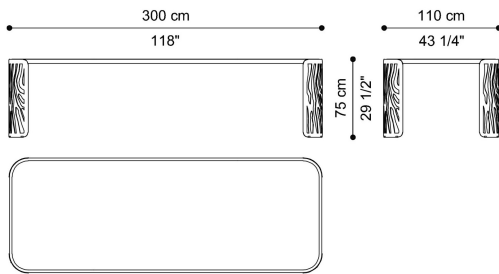
Structure in calendered iron with laser-cut animal design, in matt Black finishing or in the brushed finishings from the collection.

Top in decorated glass from the collection or in porcelain gres from the collection.

Lower part of the top in MDF reinforced by aluminium, lacquered in matt finishing.

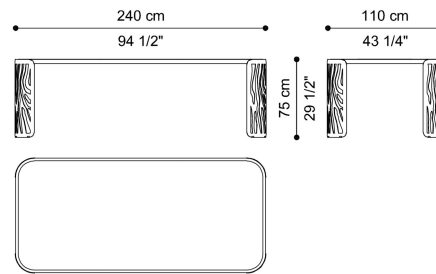
DIMENSIONS

DINING TABLE
C.KAL.122.B



L 300 D 110 H 75 CM

DINING TABLE
C.KAL.122.C



L 240 D 110 H 75 CM

STRUCTURE

METAL



Metal Black - Matt



Metal Brushed Gold



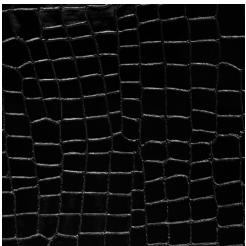
Metal Brushed Dark
Bronze



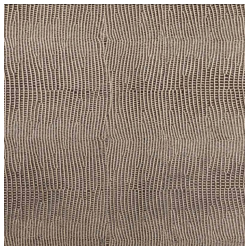
Metal Brushed
Bronze

TOP

GLASS



Black Crocodile
Glass



Snakeskin Glass



Gold Scratch Glass

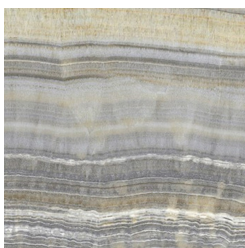


Gold Dust Glass

PORCELAIN GRES



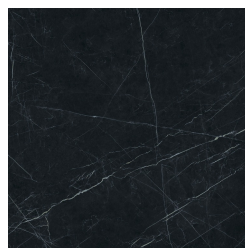
Ivory Porcelain Gres
- Glossy



Grey Porcelain Gres -
Glossy



Black Porcelain Gres
- Glossy



Dark Porcelain Gres
- Glossy