



DESCRIPTION

Structure composed of top and two bases.

One base made of iron tubes of different sizes in round and square sections, in the glossy or brushed finishings from the collection. RC monogram engraved on the upper end of one of the tubes.

One base with three drawers in curved multilayer wood, veneered in glossy Grey/Rose Carbalho or Eucalyptus fris e or lacquered in the glossy finishings from the collection.

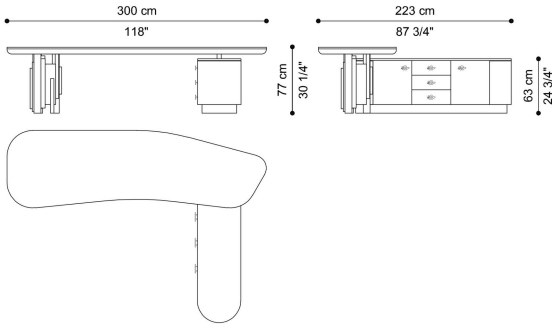
Drawers with inner cover in microfibre, col. anthracite. Jewel handles in lost-wax cast brass available in Gold or Platinum finishing.

Top in multilayer wood, HDF and MDF, veneered in glossy Grey/Rose Carbalho or Eucalyptus fris e or lacquered in the glossy finishings from the collection.

Lower part of the top covered in plain leather from the collection.

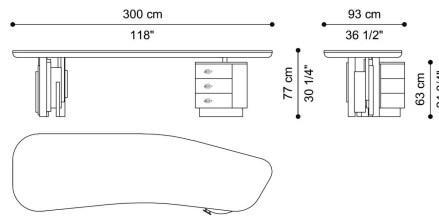
DIMENSIONS

DESK
C.ANT.411.A



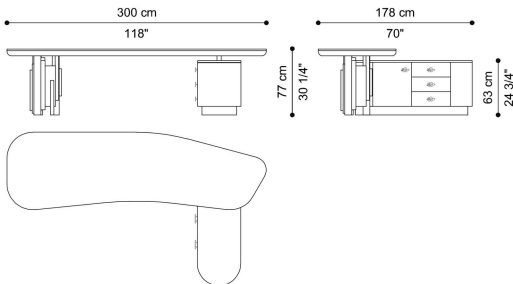
L 300 D 223 H 77 CM

DESK
C.ANT.411.B



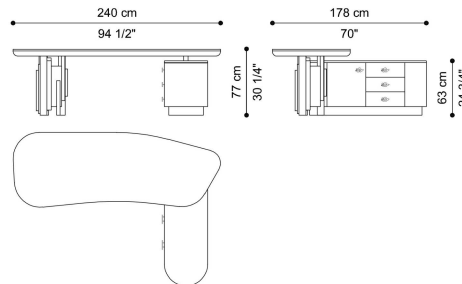
L 300 D 93 H 77 CM

DESK
C.ANT.411.C



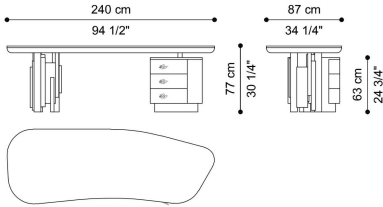
L 300 D 178 H 77 CM

DESK
C.ANT.411.D



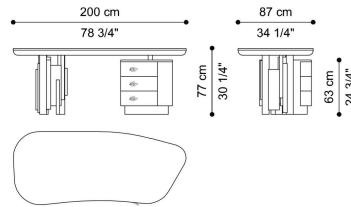
L 240 D 178 H 77 CM

DESK
C.ANT.411.E



L 240 D 87 H 77 CM

DESK
C.ANT.411.F



L 200 D 87 H 77 CM

BASE

METAL



Metal Brushed
Bronze



Metal Brushed Dark
Bronze



Metal Brushed Gold



Metal Chrome -
Glossy



Metal Black Chrome
- Glossy



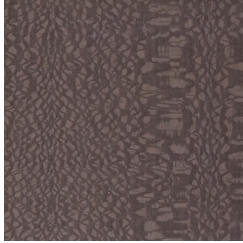
Metal Gold - Glossy

TOP

WOOD



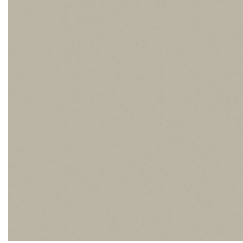
Grey Carvalho
veneered wood -
Glossy



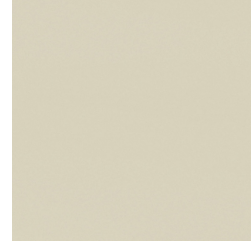
Rose Carvalho
veneered wood -
Glossy



Eucalyptus fris 
veneered wood -
Glossy



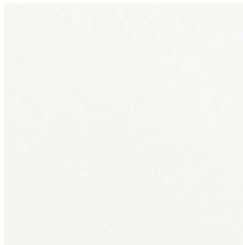
Desert lacquered
wood - Glossy



Ivory lacquered
wood - Glossy



Black lacquered
wood - Glossy



White lacquered
wood - Glossy



Dark Brown
lacquered wood -
Glossy