

SAHARA.6
NIGHT STORAGE UNITS



SAHARA.6

NIGHT STORAGE UNITS

DESCRIPTION

Structure in multilayer wood.
Base, sides and top covered in leather from the collection.
Optional marble top cat. A. Available on demand in onyx from the collection.
Engraved drawers lacquered in the glossy finishings from the collection.
Inner cover in microfibre.
Metal feet in the glossy or brushed finishings from the collection.

DIMENSIONS

NIGHT TABLE

C.SA6.321.A



L 66 D 50 H 60 CM

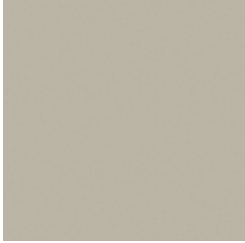
OPTIONAL

MARBLE TOP
ONYX
C.COM.968.B2X

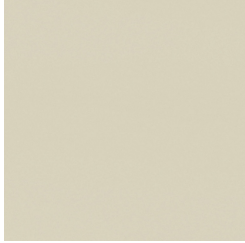
MARBLE TOP
MARBLE CAT. A
C.COM.968.BTX

DRAWERS

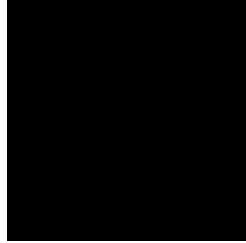
WOOD



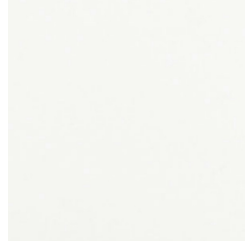
Desert lacquered wood - Glossy



Ivory lacquered wood - Glossy



Black lacquered wood - Glossy



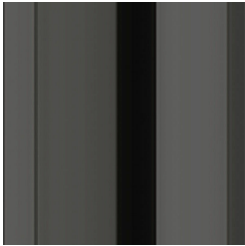
White lacquered wood - Glossy



Dark Brown lacquered wood - Glossy

FEET

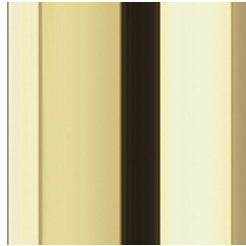
METAL



Metal Black Chrome - Glossy



Metal Chrome - Glossy



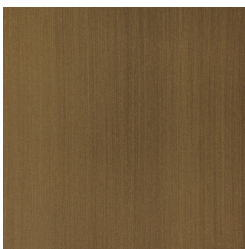
Metal Gold - Glossy



Metal Brushed Gold



Metal Brushed Dark Bronze



Metal Brushed Bronze

UPHOLSTERY

FABRIC / LEATHER

 [download the file in the product page](#)