

**SAHARA.3**  
NIGHT STORAGE UNITS

**roberto cavalli**  
HOME  
INTERIORS



# SAHARA.3

## NIGHT STORAGE UNITS

---

### DESCRIPTION

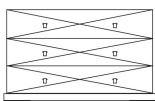
Structure in multilayer wood.  
Top and sides covered in bevelled Natural, Bronzed or Smoked mirror.  
Drawers and base veneered in glossy Oak Dyed Wengé.  
Inner cover in microfibre.  
Metal feet in the glossy or brushed finishings from the collection.  
RC monogram and Jewel handles in cast brass available in Gold or Platinum finishing.

---

### DIMENSIONS

DRAWER UNIT

**C.SA3.331.A**



L 146 D 50 H 84 CM

---

### DRAWERS/BASE

#### WOOD

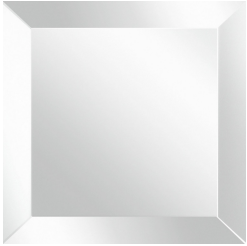


Oak veneered Dyed  
Wengé wood -  
Glossy

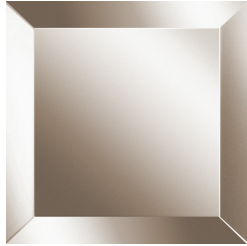
---

SIDES/TOP

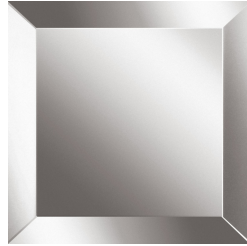
**MIRROR**



Natural Mirror



Bronzed Mirror



Smoked Mirror

---

FEET

**METAL**



Metal Black Chrome  
- Glossy



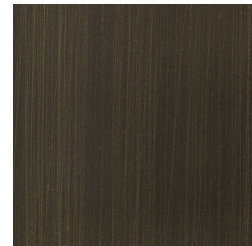
Metal Chrome -  
Glossy



Metal Gold - Glossy



Metal Brushed Gold



Metal Brushed Dark  
Bronze



Metal Brushed  
Bronze