

HIDE PARK
NIGHT STORAGE UNITS

roberto cavalli
HOME
INTERIORS



HIDE PARK

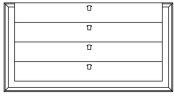
NIGHT STORAGE UNITS

DESCRIPTION

Structure in multilayer wood covered in plain leather from the collection.
Drawers front covered in plain leather from the collection, with optional hexagonal quilting.
Jewel handles in cast brass available in Gold or Platinum finishing. Inner cover in microfibre.
Metal frame in the glossy or brushed finishings from the collection.

DIMENSIONS

DRAWER UNIT
C.HID.331.A



L 160 D 48 H 85 CM

OPTIONAL

HEXAGONAL QUILTING
AVAILABLE ONLY ON PLAIN LEATHER - FOR
DRAWERS FRONT
C.COM.887.NMX



FRAME

METAL



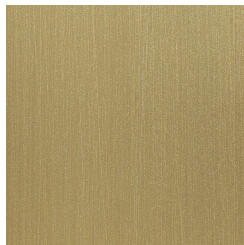
Metal Black Chrome - Glossy



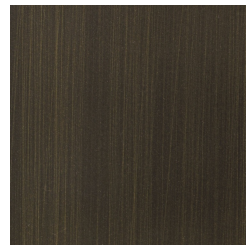
Metal Chrome - Glossy



Metal Gold - Glossy



Metal Brushed Gold



Metal Brushed Dark Bronze



Metal Brushed Bronze

UPHOLSTERY

FABRIC / LEATHER

 [download the file in the product page](#)