

FLY CASE
DAY STORAGE UNITS

roberto cavalli

HOME

INTERIORS



FLY CASE DAY STORAGE UNITS

roberto cavalli

HOME

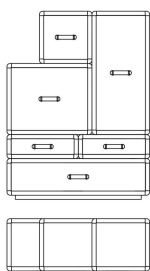
INTERIORS

DESCRIPTION

Structure in multilayer wood, covered in leather from the collection, or veneered in glossy Oak Dyed Wengé, Grey/Rose Carbalho or Eucalyptus fris . Metal details in the glossy or brushed finishings from the collection. Leather handles. Optional hexagonal or lozenge quilted leather.

DIMENSIONS

CABINET - WITH DOORS AND DRAWERS (RIGHT)
C.FLY.113.D



L 136 D 50 H 180 CM

CABINET - WITH DOORS AND DRAWERS (LEFT)
C.FLY.113.E



L 136 D 50 H 180 CM

OPTIONAL

HEXAGONAL QUILTING

Available only on plain leather - for drawers and doors front

C.COM.913.GMX



HEXAGONAL QUILTING

Available only on plain leather - for structure

C.COM.913.HMX



LOZENGE QUILTING

Available only on plain leather - for drawers and doors front

C.COM.916.HMX



LOZENGE QUILTING

Available only on plain leather - for structure

C.COM.916.RMX



STRUCTURE

WOOD



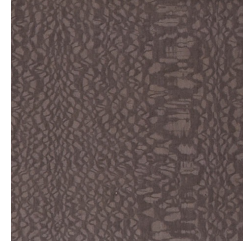
Eucalyptus frisé
veneered wood -
Glossy



Grey Carbalho
veneered wood -
Glossy



Oak veneered Dyed
Wengé wood -
Glossy



Rose Carbalho
veneered wood -
Glossy

DETAILS

METAL



Metal Black Chrome
- Glossy



Metal Brushed
Bronze



Metal Brushed Dark
Bronze



Metal Brushed Gold



Metal Chrome -
Glossy



Metal Gold - Glossy

UPHOLSTERY

FABRIC / LEATHER

 [download the file in the product page](#)