

TAHITI
CHAIRS

roberto cavalli
HOME
INTERIORS



DESCRIPTION

Structure in multilayer wood and foam.
Upholstery in fabric or leather from the collection. Optional UMA quilted leather.
Metal legs in the glossy or brushed finishings from the collection.

DIMENSIONS

CHAIR WITH ARMRESTS

C.TAH.132.A



L 67 D 60 H 86 CM

OPTIONAL

UMA QUILTING

AVAILABLE ONLY ON PLAIN LEATHER

C.COM.922.GMX



LEGS

METAL



Metal Black Chrome - Glossy



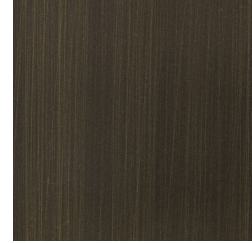
Metal Chrome - Glossy



Metal Gold - Glossy



Metal Brushed Gold




Metal Brushed Dark Bronze



Metal Brushed Bronze

UPHOLSTERY

FABRIC / LEATHER

 [download the file in the product page](#)