

DESCRIPTION

Structure in laser-cut and calendered sheet iron, in the brushed finishings from the collection.

Lower part of the top in bevelled MDF, lacquered matt Black.

Top in MDF, veneered in glossy Oak Dyed Wengé, Grey/Rose Carbalho or Eucalyptus fris .

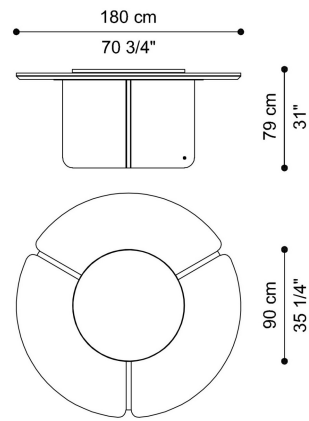
Inserts in folded laser-cut sheet iron, in the brushed finishings from the collection.

Lazy Susan in porcelain gres from the collection, framed by a circular structure in sheet iron in the brushed finishings from the collection.

Brass plate with RC monogram.

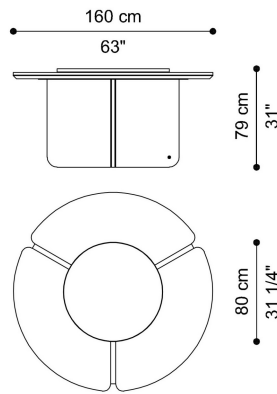
DIMENSIONS

DINING TABLE
C.KIB.123.A



Ø 180 H 79 CM

DINING TABLE
C.KIB.123.B

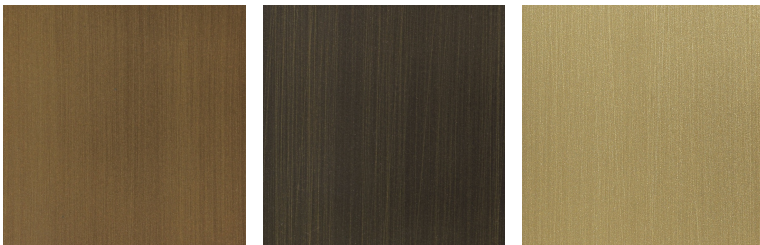


Ø 160 H 79 CM

BASE

METAL

Brushed Metal



Metal Brushed
Bronze

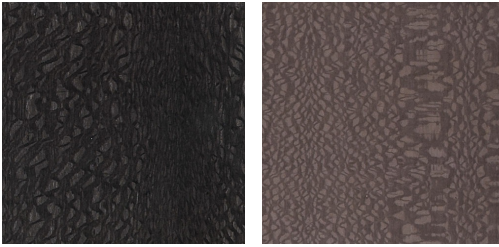
Metal Brushed Dark
Bronze

Metal Brushed Gold

TOP

WOOD

Carbalho Veneered Wood



Grey Carbalho
veneered wood -
Glossy

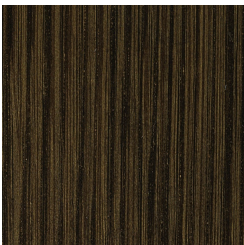
Rose Carbalho
veneered wood -
Glossy

Eucalyptus Frisé Veneered Wood



Eucalyptus fris e
veneered wood -
Glossy

Oak Dyed Weng  Veneered Wood

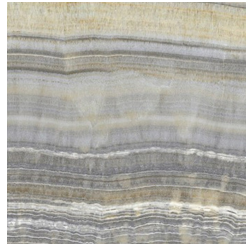
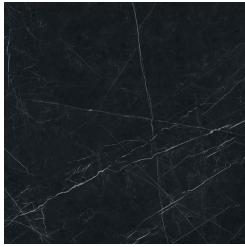


Oak veneered Dyed
Weng  wood -
Glossy

LAZY SUSAN

PORCELAIN GRES

Porcelain Gres



Black Porcelain Gres
- Glossy

Dark Porcelain Gres
- Glossy

Grey Porcelain Gres -
Glossy

Ivory Porcelain Gres
- Glossy